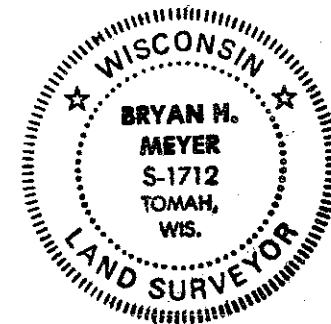


21503020000



I, Bryan H. Meyer, do hereby certify that on the 9th day of May 19 89, I found ~~(no evidence)~~ (no evidence) of the Northeast corner of Section 11, T 15 N, R 3 W Fourth Principal Meridian, and I re-established said corner according to the Wisconsin Statutes as shown and described hereon.

History of corner establishment since Original Government Survey

Webster Kenyon was here in November of 1891. Fred Holden was here sometime in 1908.

Description of corner evidence found:

I re-established this corner by double proportionate measurement as per law.

Dated this 6th day of July 19 89.

Bryan H. Meyer

Registered Land Surveyor
Title

COUNTY SURVEYOR FORM NO. 1

Description of corner and witness monuments, references and accessories used to perpetuate the original or re-established location of this corner:

Crew: Kenworthy, Forsythe

Date: May 9, 1989

Weather: Sunny, 60°±

Witnesses to corner location:

John Kenworthy

Brian Forsythe

H. A. SIME & ASSOC.

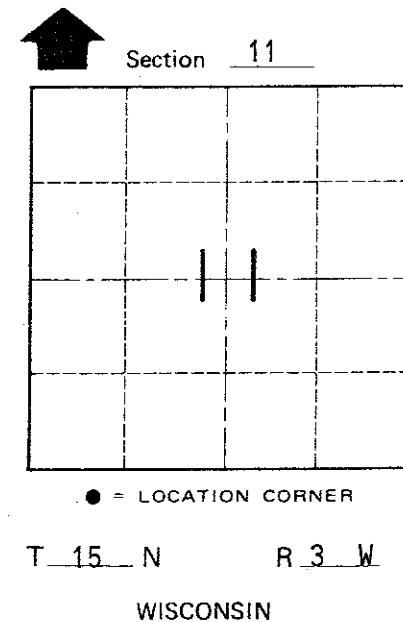
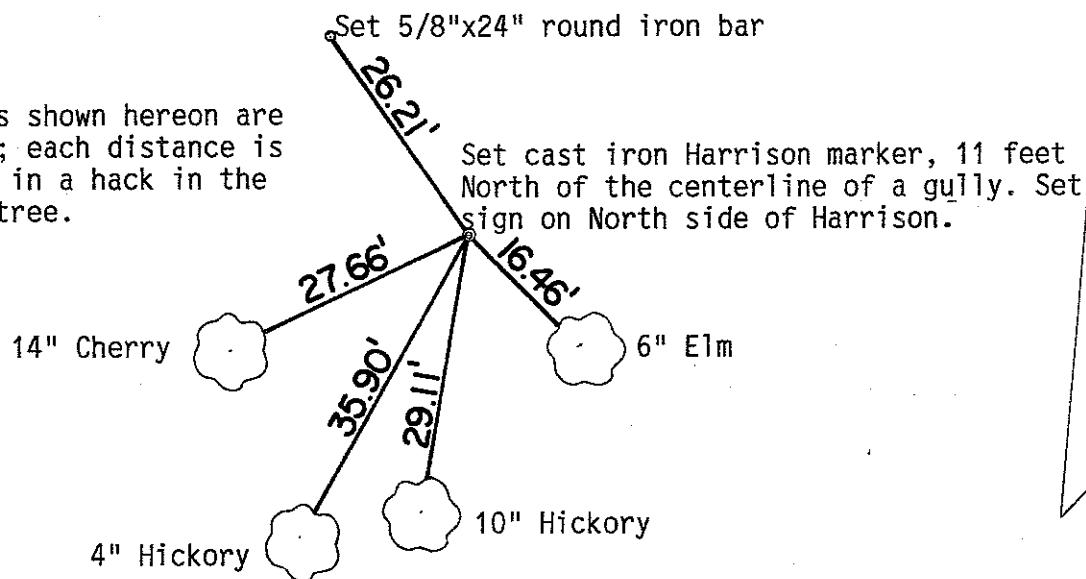
Surveying & Land Planning

1819 Stoughton Ave. - P.O. Box 703

TOMAH, WI 54660

608-372-5392

The four trees shown hereon are double blazed; each distance is to a nail set in a hack in the side of each tree.



SURVEY CONTROL ORDER

Horizontal	_____
Vertical	_____

WISCONSIN COORDINATE SYSTEM

Corner	East (X)	North (Y)	Elevation (Z)	Zone
Control Sta. Name				

~~City, Village or~~ Town of Jefferson

County of Monroe