

21503010000

I, Gary L. Dechant, do hereby certify that on the 19th day of April 1984, I found (evidence) (~~no evidence~~) of the NE corner of Section 12, T 15 N, R 3 W Fourth Principal Meridian, and I re-established said corner according to the Wisconsin Statutes as shown and described hereon.

Dated this 22nd day of April 1984.

Gary L. Dechant

Registered Land Surveyor, S-1744
Title

History of corner establishment since Original Government Survey

Webster Kenyon was here in November of 1891 and in his notes shows a stone, 8" wide by 21" long, at this corner.

Description of corner evidence found:

Could not find stone, but did find unrecorded iron bar and accepted it as the corner as it fit conditions well.

COUNTY SURVEYOR FORM NO. 1

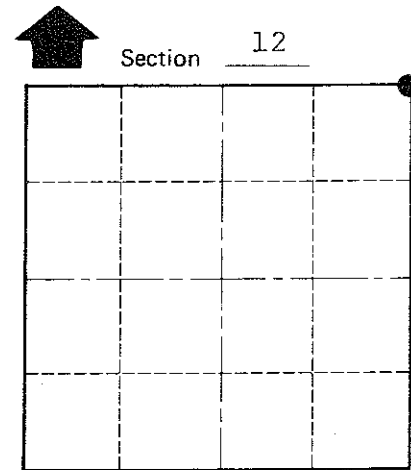
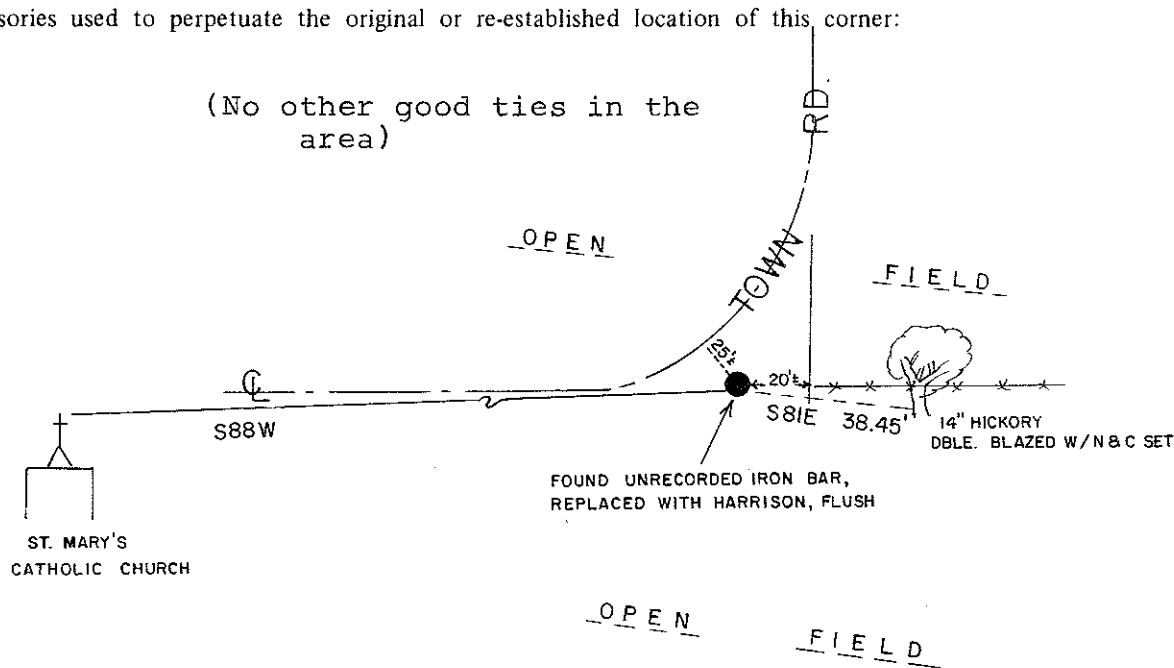
Description of corner and witness monuments, references and accessories used to perpetuate the original or re-established location of this corner:

(No other good ties in the area)

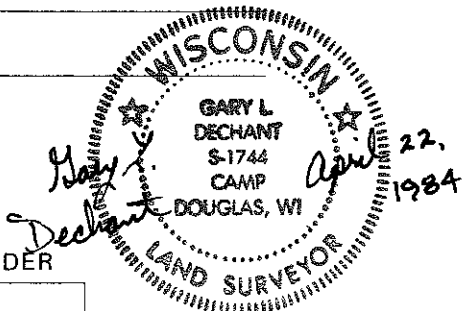
Witnesses to corner location:

Lawrence A. Feddersen, S-1226

Gary L. Dechant



● = LOCATION CORNER



ST. MARY'S CATHOLIC CHURCH

SURVEY CONTROL ORDER

Horizontal	_____
Vertical	_____

WISCONSIN COORDINATE SYSTEM

Corner	East (X)	North (Y)	Elevation (Z)	Zone
Control Sta. Name				

City, Village or Town Jefferson
County of Monroe