

21501362000

I, William C. Jung, do hereby certify that on the 4th day of October 1982, I found ~~evidence~~ (no evidence) of the West 1/4 corner of Section 31, T 15 N, R 1 E Fourth Principal Meridian, and I re-established said corner according to the Wisconsin Statutes as shown and described hereon.

History of corner establishment since Original Government Survey

No recorded history since the original government survey.

Description of corner evidence found:

I set this corner by single proportionate measurement along the 4th Principal Meridian, using the NW Corner of Section 30-T15N-R1E and the W1/16NW of Section 6-T14N-R1E, as my points of termination.

Dated this 24th day of Jan. 1983.

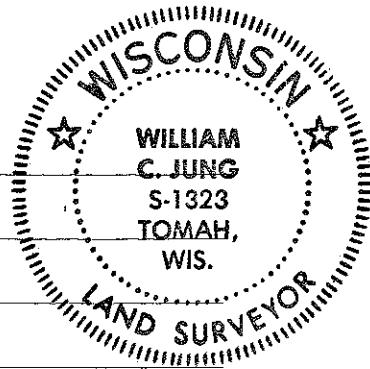
William C. Jung
Deputy County Surveyor
Title

COUNTY SURVEYOR FORM NO. 1

Description of corner and witness monuments, references and accessories used to perpetuate the original or re-established location of this corner:

Witnesses to corner location:

William Jung
Bryan Meyer



Approved: **HARLEY A. SIME**
MONROE CO. SURVEYOR

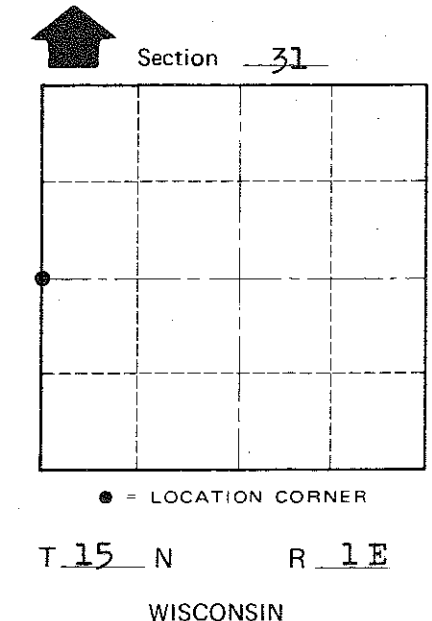
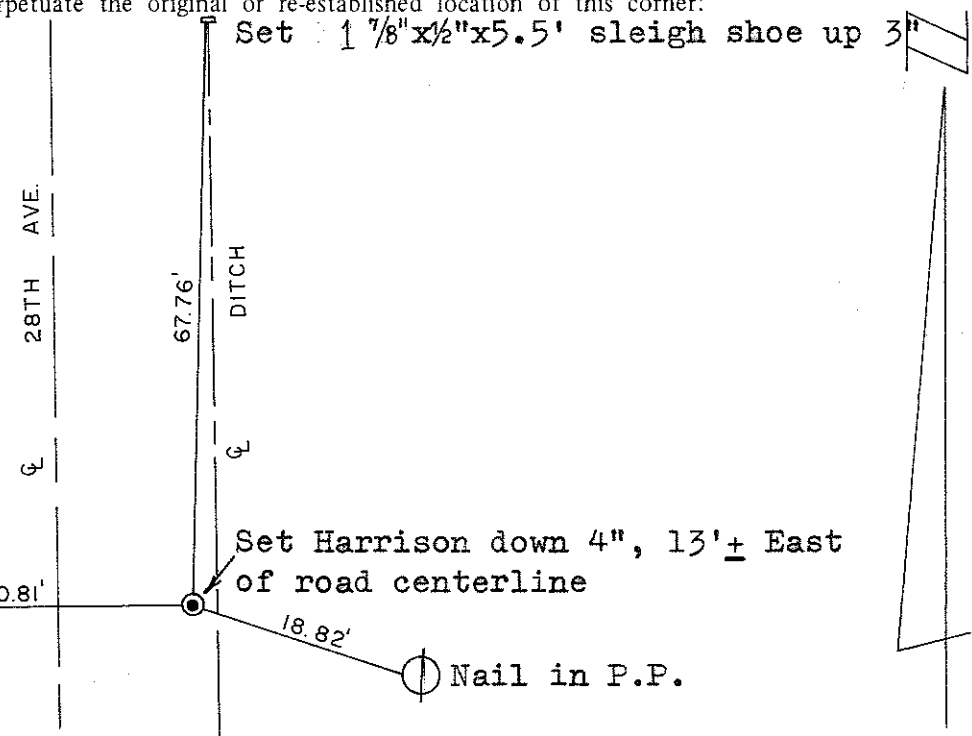
SURVEY CONTROL ORDER

Horizontal _____
Vertical _____

Set 1 7/8" x 1/2" x 5.5' sleigh shoe, up 5", in ditch

WISCONSIN COORDINATE SYSTEM

Corner	East (X)	North (Y)	Elevation (Z)	Zone
Control Sta. Name				



~~City, Village or~~ Town of Glendale
County of Monroe

21501362000

I, William C. Jung, do hereby certify that on the 4th day of October 1982, I found ~~(evidence)~~ (no evidence) of the West 1/4 corner of Section 31, T 15 N, R 1 E Fourth Principal Meridian, and I re-established said corner according to the Wisconsin Statutes as shown and described hereon.

History of corner establishment since Original Government Survey

No recorded history since the original government survey.

Description of corner evidence found:

I set this corner by single proportionate measurement along the 4th Principal Meridian, using the NW Corner of Section 30-T15N-R1E and the W1/16NW of Section 6-T14N-R1E, as my points of termination.

Dated this 24th day of Jan. 1983.

William C. Jung

Deputy County Surveyor

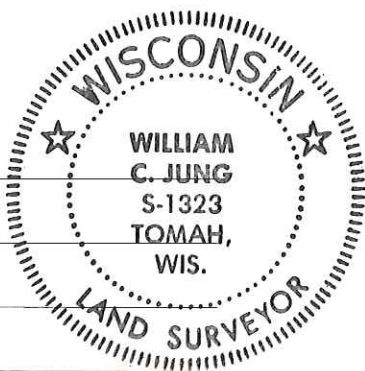
Title

Description of corner and witness monuments, references and accessories used to perpetuate the original or re-established location of this corner:

Witnesses to corner location:

William Jung

Bryan Meyer



Approved: **HARLEY A. SIME**
MONROE CO. SURVEYOR

SURVEY CONTROL ORDER

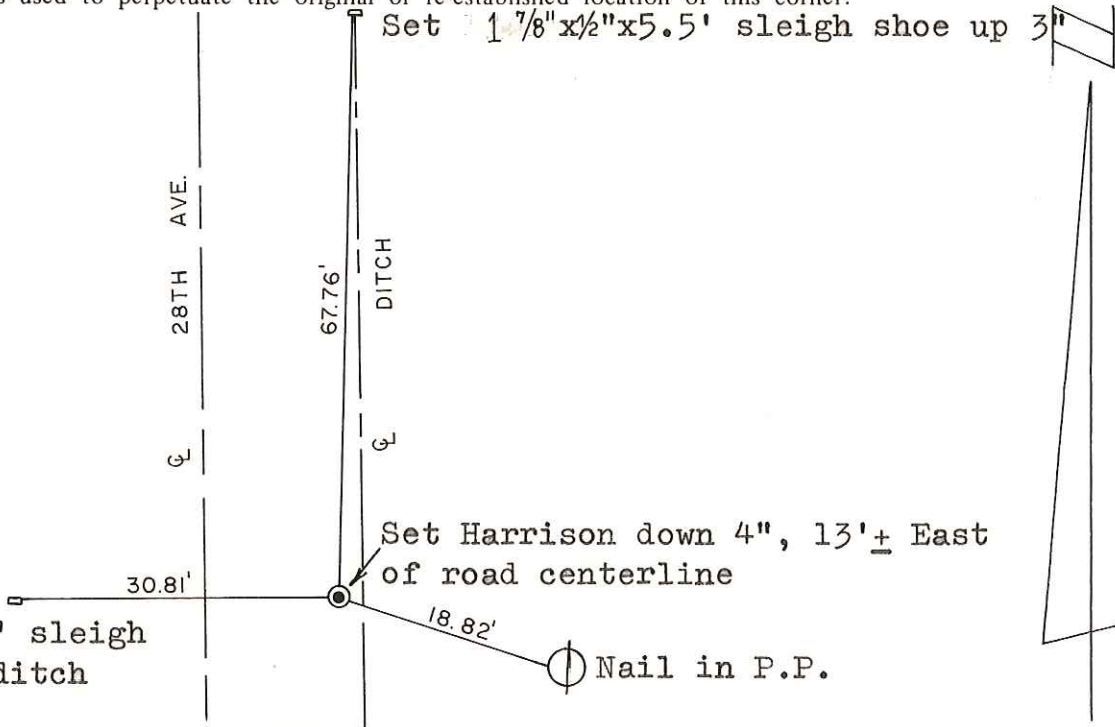
Horizontal	_____
Vertical	_____

Set 1 7/8" x 1/2" x 5.5' sleigh shoe, up 5", in ditch

WISCONSIN COORDINATE SYSTEM

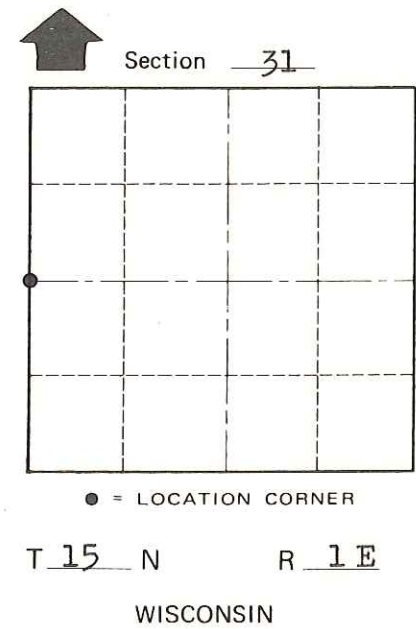
Corner	East (X)	North (Y)	Elevation (Z)	Zone
Control Sta. Name				

Set 1 7/8" x 1/2" x 5.5' sleigh shoe up 3"



Set Harrison down 4", 13'± East of road centerline

Nail in P.P.



COUNTY SURVEYOR FORM NO. 1

~~City, Village or~~ Town of Glendale
 County of Monroe