

VERNON COUNTY CERTIFIED U.S. PUBLIC LAND SURVEY MONUMENT RECORD

INSTRUCTIONS: THIS RECORD SHALL SHOW THE LOCATION OF THE CORNER AND SHALL INCLUDE ALL OF THE FOLLOWING ELEMENTS (A-I)

(A) IDENTIFY THE CORNER BY REFERENCE TO THE U.S. PUBLIC LAND SURVEY SYSTEM

■ = CORNER MONUMENT RESTORED

WITNESSES TO CORNER LOCATION:

- 1) Robert M. Lampman
- 2) Jessica A. Zamor

VERNON COUNTY COORDINATES - NAD83(1991) - SURVEY FEET

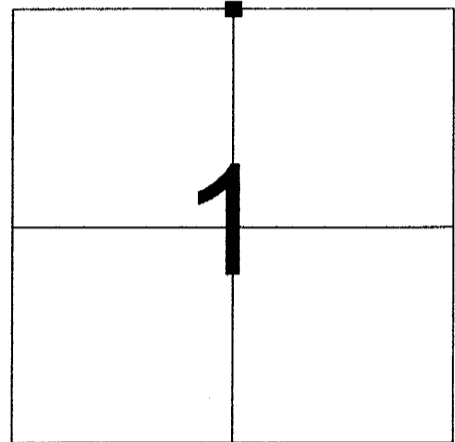
NORTHING: 211126.890

EASTING: 819997.668

MONROE COUNTY COORDINATES - NAD83(1991) - SURVEY FEET

NORTHING: 300127.401

EASTING: 723546.961



SECTION 1
TOWN 14 NORTH, RANGE 1 WEST

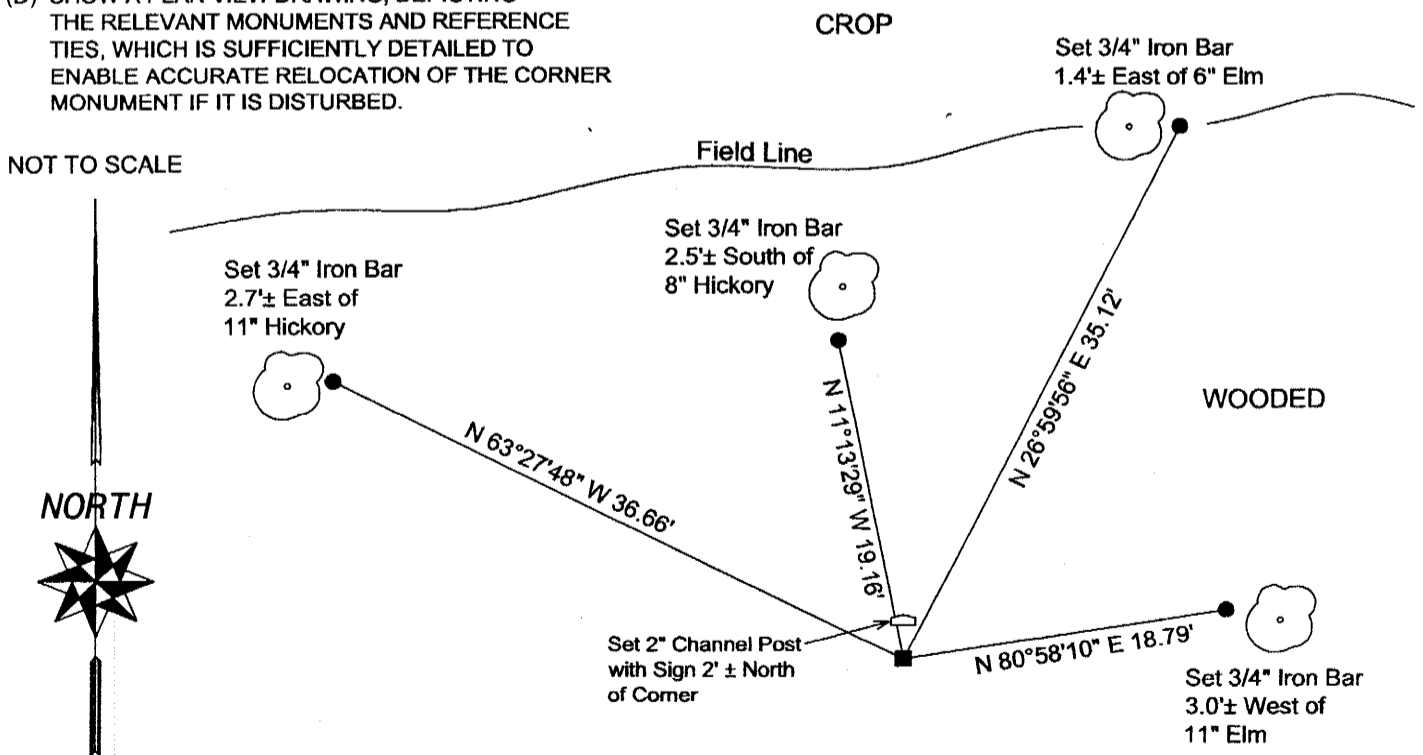
(B) DESCRIBE ANY RECORD EVIDENCE, MONUMENT EVIDENCE, OCCUPATIONAL EVIDENCE, TESTIMONIAL EVIDENCE OR ANY OTHER MATERIAL EVIDENCE YOU CONSIDERED, AND WHETHER THE MONUMENT WAS FOUND OR PLACED.

Accepted location of existing Harrison Monument. Existing Harrison Monument was established by William C. Jung in January of 1983. Jung reestablished the corner location by doubling distance and direction east from found monuments of record at the Southwest corner of Section 36, T15N, R1W and the SE corner of the SW 1/4 of the SW 1/4 of said Section 36. Jung also notes that he found old remains of East-West fence at the corner area.

(See reverse side for corner history.)

(C) IN THE PLAN VIEW DRAWING BELOW, PROVIDE REFERENCE TIES TO AT LEAST 4 WITNESS MONUMENTS OR, IF THE LOCATION IS WITHIN A MUNICIPALITY, TO AT LEAST 2 WITNESS MONUMENTS. (WITNESS MONUMENTS SHALL BE MADE OF CONCRETE, NATURAL STONE, IRON, OR OTHER EQUALLY DURABLE MATERIAL.) DESCRIBE WITNESS MONUMENTS.

(D) SHOW A PLAN VIEW DRAWING, DEPICTING THE RELEVANT MONUMENTS AND REFERENCE TIES, WHICH IS SUFFICIENTLY DETAILED TO ENABLE ACCURATE RELOCATION OF THE CORNER MONUMENT IF IT IS DISTURBED.



LEGEND

- FOUND EXISTING CAST IRON HARRISON MONUMENT
- SET 3/4" X 24" ROUND IRON BAR FOR WITNESS MONUMENT

WOODED

(E) DESCRIBE ANY MATERIAL DISCREPANCY BETWEEN THE LOCATION OF THE CORNER AS RESTORED OR REESTABLISHED AND THE LOCATION OF THAT CORNER AS PREVIOUSLY RESTORED OR REESTABLISHED BY DISTANCE AND DIRECTION. SHOW THE DISCREPANCY ON THE PLAN VIEW DRAWING UNDER (D), ABOVE. SHOW THE DISTANCES BETWEEN THE CORNER AS PREVIOUSLY RESTORED OR REESTABLISHED AND (1) THE CORNER AS RESTORED OR REESTABLISHED, AND (2) TO AT LEAST 2 OF THE WITNESS MONUMENTS AS SHOWN ON THE DRAWING IN (D), ABOVE.

N/A

(F) WAS THE CORNER RESTORED THROUGH ACCEPTANCE OF (1) AN OBLITERATED EVIDENCE LOCATION, OR (2) A FOUND PERPETUATED LOCATION?

(2) A FOUND PERPETUATED LOCATION

(G & H) WAS THE CORNER REESTABLISHED THROUGH LOST CORNER PROPORTIONATE METHODS? IF SO SHOW THE METHOD, INCLUDING THE DIRECTIONS AND DISTANCES TO OTHER PUBLIC LAND SURVEY CORNERS USED AS EVIDENCE OR USED FOR PROPORTIONING IN DETERMINING THE CORNER LOCATION.

N/A

(**) ANY ADDITIONAL INFORMATION RELATED TO CORNER LOCATION

CORNER HISTORY:

-Original government corner location established by Uriah Biggs in 1845.

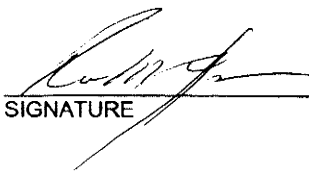
-Alex Ristow prepared a resurvey of the North 1/2 of Section 1, T14N, R1W in May of 1906. However, Ristow's survey makes no call for a monument or witnesses at the N 1/4 corner of said Section 1.

-William C. Jung placed a Harrison Monument at the corner and prepared a tie sheet dated January 26, 1983. Jung reestablished the corner location by doubling distance and direction east from found monuments of record at the Northwest corner of Section 1 and the Northeast corner of the NW 1/4 of the NW 1/4 of said Section 1. Jung also notes that he found remains of old east-west fence at this corner area.

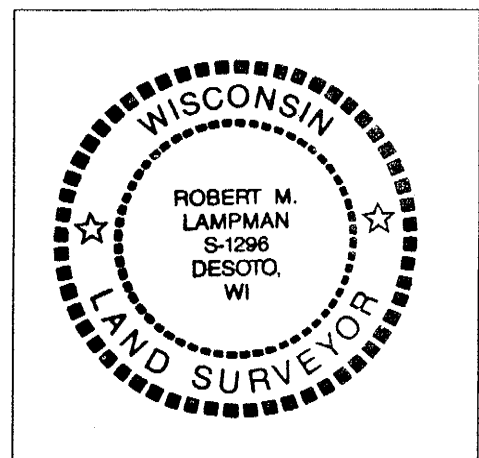
-Jessica A. Zamor shows an existing Harrison Monument at the corner on a data sheet for Section 1, T14N, R1W dated September 18, 2002.

AFFIX LAND SURVEYOR SEAL

(I) I, ROBERT M. LAMPMAN, CERTIFY THAT THE LOCATION SHOWN ON THIS RECORD WAS DETERMINED BY ME OR UNDER MY DIRECTION AND CONTROL AND THAT THIS U.S. PUBLIC LAND SURVEY MONUMENT RECORD IS CORRECT AND COMPLETE TO THE BEST OF MY KNOWLEDGE AND BELIEF.


SIGNATURE

310-04
DATE



I, William C. Jung, do hereby certify that on the 18th day of October 1982, I found ~~(evidence)~~ (no evidence) of the South 1/4 corner of Section 36, T 15 N, R 1 W Fourth Principal Meridian, and I re-established said corner according to the Wisconsin Statutes as shown and described hereon.

Dated this 26th day of Jan. 1983.

William C. Jung

Deputy County Surveyor

Title

History of corner establishment since Original Government Survey

In May of 1906, Ristow (from Vernon County), surveyed the North line of Section 1, T14N-R1W. He does not show anything at this corner however.

Description of corner evidence found:

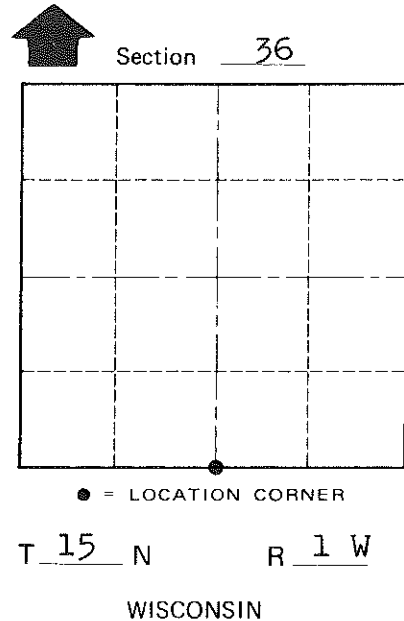
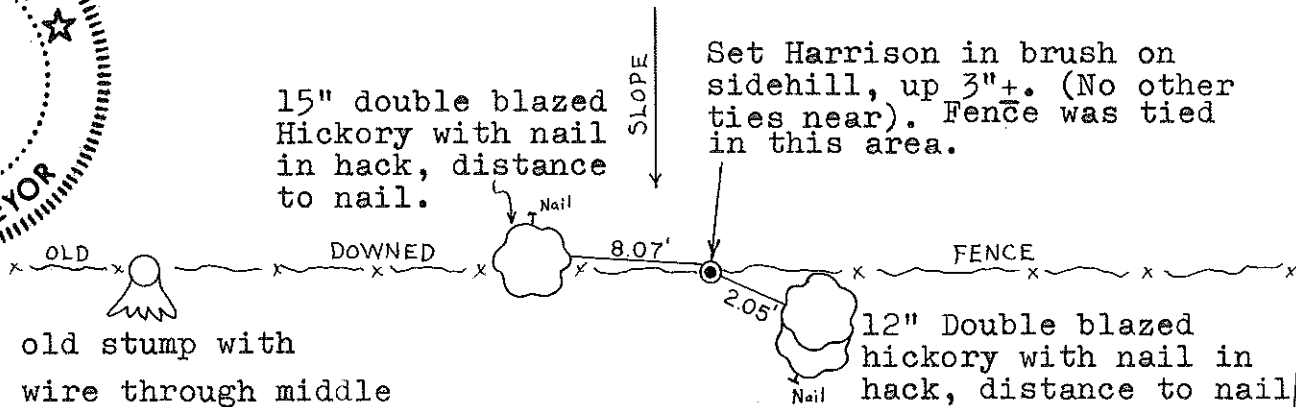
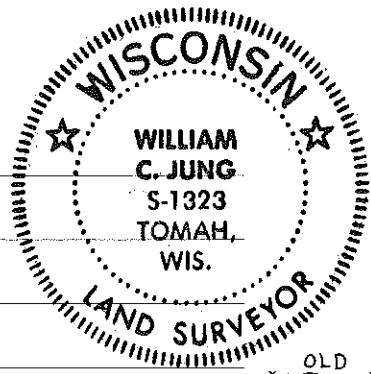
I found the monuments of record at the SW and S1/16SW Corners of Section 36. I set this 1/4 corner on line with the SW and S1/16SW Corners, and at a distance from the S1/16SW equal to the distance between the SW and S1/16SW Corners. I found very old East-West fence wire while digging. My South line of Section 36 fits the existing conditions very well.

Description of corner and witness monuments, references and accessories used to perpetuate the original or re-established location of this corner:

Witnesses to corner location:

William C. Jung

Melvin Pliner



COUNTY SURVEYOR FORM NO. 1

SURVEY CONTROL ORDER

Horizontal	_____
Vertical	_____

Approved: **HARLEY A. SIME**
MONROE CO. SURVEYOR

WISCONSIN COORDINATE SYSTEM

Corner	East (X)	North (Y)	Elevation (Z)	Zone
Control Sta. Name				

~~City, Village or~~ Town of Wellington
County of Monroe