

VERNON COUNTY CERTIFIED U.S. PUBLIC LAND SURVEY MONUMENT RECORD

INSTRUCTIONS: THIS RECORD SHALL SHOW THE LOCATION OF THE CORNER AND SHALL INCLUDE ALL OF THE FOLLOWING ELEMENTS (A-I)

(A) IDENTIFY THE CORNER BY REFERENCE TO THE U.S. PUBLIC LAND SURVEY SYSTEM

■ = CORNER MONUMENT RESTORED

WITNESSES TO CORNER LOCATION:

- 1) Robert M. Lampman
- 2) Jessica A. Zamor

VERNON COUNTY COORDINATES - NAD83(1991) - SURVEY FEET

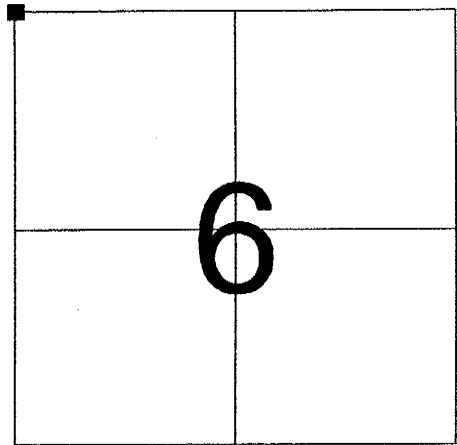
NORTHING: 211131.833

EASTING: 822645.534

MONROE COUNTY COORDINATES - NAD83(1991) - SURVEY FEET

NORTHING: 300127.882

EASTING: 726194.859



SECTION 6
TOWN 14 NORTH, RANGE 1 EAST

(B) DESCRIBE ANY RECORD EVIDENCE, MONUMENT EVIDENCE, OCCUPATIONAL EVIDENCE, TESTIMONIAL EVIDENCE OR ANY OTHER MATERIAL EVIDENCE YOU CONSIDERED, AND WHETHER THE MONUMENT WAS FOUND OR PLACED.

Accepted location of existing 1-3/8" iron rod at corner. The 1-3/8" iron rod was set by William Jung in February of 1983. William Jung reestablished the corner location by single proportionate measurement between the NW corner of Section 30, T15N, R1E and the W 1/16 of the NW 1/4 of Section 6, T14N, R1E.

Replaced the existing 3/8" iron rod with a Vernon County Lunde Monument.

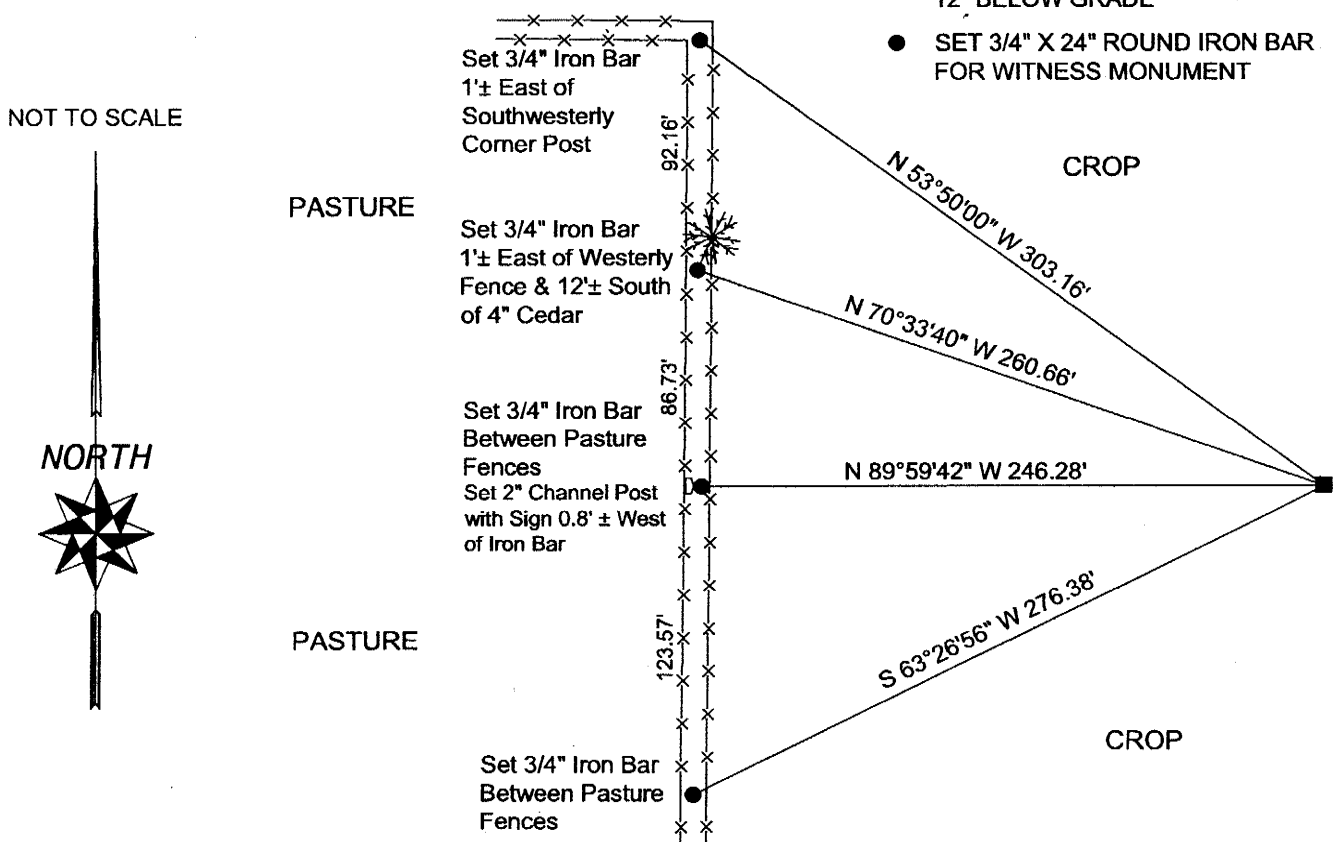
(See reverse side for corner history.)

(C) IN THE PLAN VIEW DRAWING BELOW, PROVIDE REFERENCE TIES TO AT LEAST 4 WITNESS MONUMENTS OR, IF THE LOCATION IS WITHIN A MUNICIPALITY, TO AT LEAST 2 WITNESS MONUMENTS. (WITNESS MONUMENTS SHALL BE MADE OF CONCRETE, NATURAL STONE, IRON, OR OTHER EQUALLY DURABLE MATERIAL.) DESCRIBE WITNESS MONUMENTS.

(D) SHOW A PLAN VIEW DRAWING, DEPICTING THE RELEVANT MONUMENTS AND REFERENCE TIES, WHICH IS SUFFICIENTLY DETAILED TO ENABLE ACCURATE RELOCATION OF THE CORNER MONUMENT IF IT IS DISTURBED.

LEGEND

- FOUND EXISTING 1-3/8" IRON ROD 12" BELOW GROUND SURFACE - REPLACED ROD WITH VERNON COUNTY LUNDE MONUMENT ALSO 12" BELOW GRADE
- SET 3/4" X 24" ROUND IRON BAR FOR WITNESS MONUMENT



(E) DESCRIBE ANY MATERIAL DISCREPANCY BETWEEN THE LOCATION OF THE CORNER AS RESTORED OR REESTABLISHED AND THE LOCATION OF THAT CORNER AS PREVIOUSLY RESTORED OR REESTABLISHED BY DISTANCE AND DIRECTION. SHOW THE DISCREPANCY ON THE PLAN VIEW DRAWING UNDER (D), ABOVE. SHOW THE DISTANCES BETWEEN THE CORNER AS PREVIOUSLY RESTORED OR REESTABLISHED AND (1) THE CORNER AS RESTORED OR REESTABLISHED, AND (2) TO AT LEAST 2 OF THE WITNESS MONUMENTS AS SHOWN ON THE DRAWING IN (D), ABOVE.

N/A

(F) WAS THE CORNER RESTORED THROUGH ACCEPTANCE OF (1) AN OBLITERATED EVIDENCE LOCATION, OR (2) A FOUND PERPETUATED LOCATION?

(2) A FOUND PERPETUATED LOCATION

(G & H) WAS THE CORNER REESTABLISHED THROUGH LOST CORNER PROPORTIONATE METHODS? IF SO SHOW THE METHOD, INCLUDING THE DIRECTIONS AND DISTANCES TO OTHER PUBLIC LAND SURVEY CORNERS USED AS EVIDENCE OR USED FOR PROPORTIONING IN DETERMINING THE CORNER LOCATION.

N/A

(**) ANY ADDITIONAL INFORMATION RELATED TO CORNER LOCATION

CORNER HISTORY:

-Original government corner location established by Stuntz & Sargent in 1851.

-Fred Holden set drive well point at the corner in June of 1904 as part of a subdivision of Section 31, T15N, R1E. Holden referred to the corner location as original by four bearings that have been cut.

-Alex Ristow visited the corner in May of 1906 as part of a survey in Section 1, T14N, R1W. Ristow only lists the corner as "Monroe County".

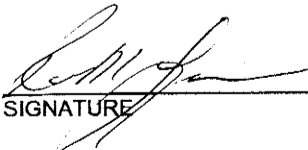
-William C. Jung set a 1-3/8" iron bar at the corner and prepared a Monroe County tie sheet dated February 7, 1983. Jung reestablished the corner location by single proportionate measurement between the NW corner of Section 30, T15N, R1E and the W 1/16 corner of the NW 1/4 of Section 6, T14N, R1E.

-James Carroll calls for an existing 1-3/8" iron rod at the corner on a survey located in part of Section 31, T15N, R1E and dated August 4, 1987.

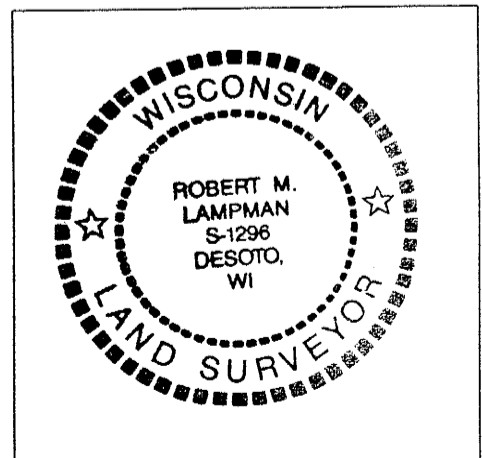
-Jessica A. Zamor calls for an existing 1-3/8" iron rod at the corner on a data sheet for Section 1, T14N, R1W dated September 18, 2002.

AFFIX LAND SURVEYOR SEAL

(I) I, ROBERT M. LAMPMAN, CERTIFY THAT THE LOCATION SHOWN ON THIS RECORD WAS DETERMINED BY ME OR UNDER MY DIRECTION AND CONTROL AND THAT THIS U.S. PUBLIC LAND SURVEY MONUMENT RECORD IS CORRECT AND COMPLETE TO THE BEST OF MY KNOWLEDGE AND BELIEF.


SIGNATURE

3-10-04
DATE



21501360000

I, William C. Jung, do hereby certify that on the 7th day of September 1982, I found no evidence of the Southwest corner of Section 31, T 15 N, R 1 E Fourth Principal Meridian, and I re-established said corner according to the Wisconsin Statutes as shown and described hereon.

Dated this 7th day of Feb. 1983.

William C. Jung

Deputy County Surveyor

Title

History of corner establishment since Original Government Survey

Holden set a drive well point at this corner in June of 1904. In May of 1906, Ristow, from Vernon County, was at this corner and shows a corner that was set by a surveyor from Monroe County. In April of 1908, Ristow shows an iron pipe at this corner.

Description of corner evidence found:

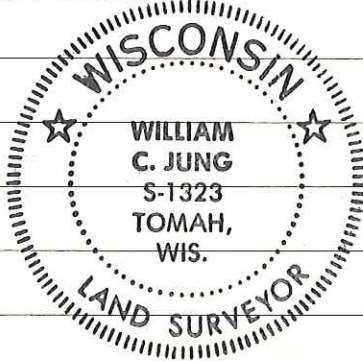
Mr. Baltz said that he accidentally knocked out Holden's well point with his farm equipment. I set this corner by single proportionate measurement along the 4th Principal Meridian, using the NW Corner-Section 30-T15N-R1E and the W1/16NW-Section 6-T14N-R1E, as my points of termination. At the W1/16NW of Section 6 I set a 3/4"x24" round iron bar @ an old (3) way fence corner. I am of the opinion that this fence corner marks Ristow's corner of 1906. My SW Corner of Section 31 as set also fits extremely well the evidence found along the South line of Section 36-T15N-R1W, and the South line of the Fractional SW1/4 of Section 31-T15N-R1E.

Description of corner and witness monuments, references and accessories used to perpetuate the original or re-established location of this corner:

Witnesses to corner location:

Jung

Pliner



Approved: **HARLEY A. SIME**
MONROE CO. SURVEYOR

SURVEY CONTROL ORDER

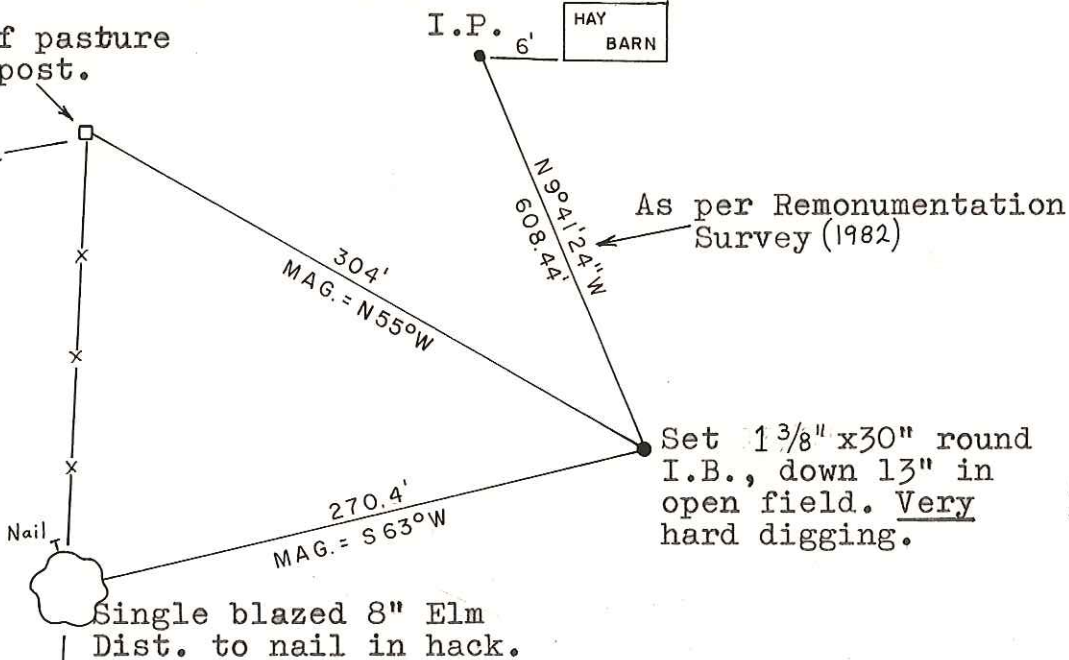
Horizontal	_____
Vertical	_____

WISCONSIN COORDINATE SYSTEM

Corner	East (X)	North (Y)	Elevation (Z)	Zone
Control Sta. Name				

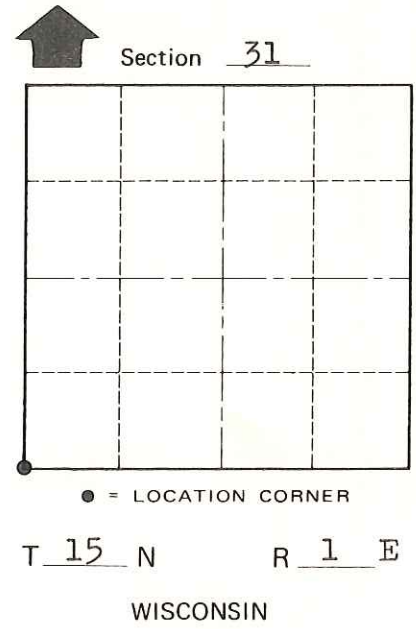
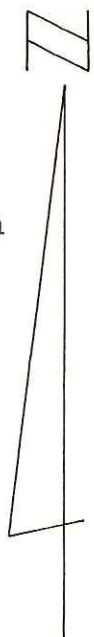
Nail on top of pasture fence corner post.

I.P. 6' HAY BARN



As per Remonumentation Survey (1982)

Set 1 3/8" x 30" round I.B., down 13" in open field. Very hard digging.



COUNTY SURVEYOR FORM NO. 1

~~City, Village or~~ Town of Glendale
County of Monroe