

**CERTIFIED LAND CORNER**

**CERTIFICATE**

**History of corner establishment since Original Government Survey**

I, Richard Blakeslee, do hereby certify that on the 7th day of June, 2011, I found (evidence) (no evidence) of the West 1/4 corner of Section 36, T 15N, R 1W Fourth principle Meridian, and I re-established said corner according to the Wisconsin Statutes as shown and described hereon.

County Surveyor Holden used this corner in April of 1901 to subdivide Section 35. Holden's notes do not say if he established the corner or he found the gov't corner. This information was found on page 115 of the Monroe County Survey Records.

Dated this 14th day of June, 2011

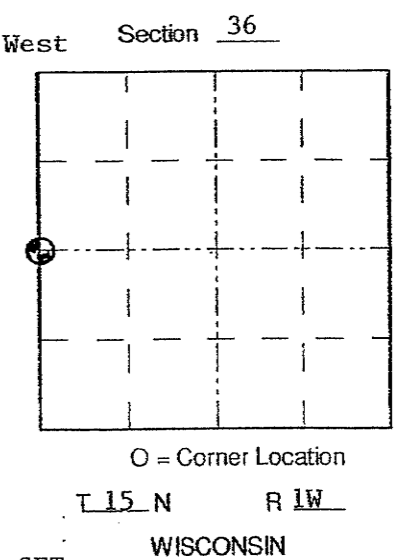
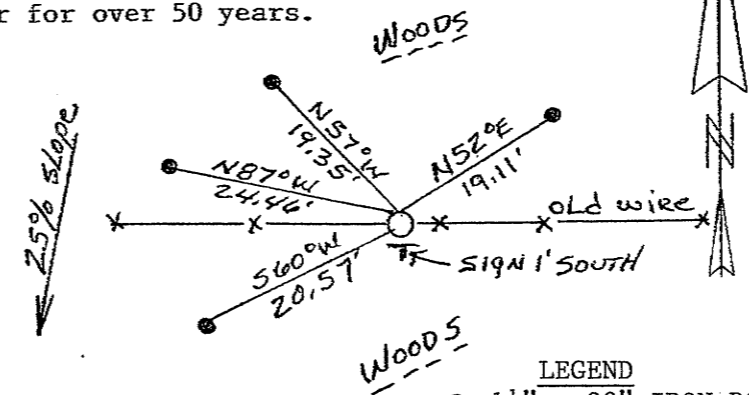
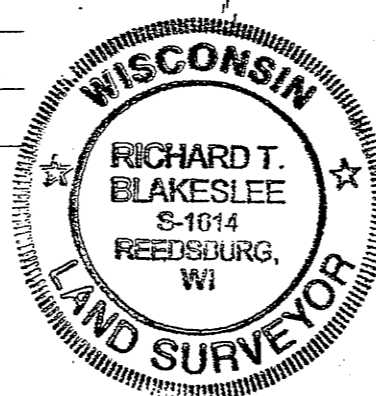
*Richard T. Blakeslee*

Register Land Surveyor \_\_\_\_\_  
Title

Description of corner and witness monuments, references and accessories used to perpetuate the original or re-established location of this corner.

I set this corner at the location as pointed out to me by local land owner Elvin Ottom. This location is at the intersection of a woven wire fence and barbed wire fence which run East and West from this corners location. We found a rotten 6" x 6" oak corner fence post lying on the ground at the corners location. From witness testimony and the found post we concluded that this has been the occupied corner for over 50 years.

Richard T. Blakeslee  
Casey Mundth  
Josh Murphy



- LEGEND**  
 ○ 1 1/2" x 30" IRON ROD SET  
 ● 3/4" x 24" IRON ROD SET FOR TIE

**SURVEY CONTROL ORDER**

Horizontal
Vertical

MONROE COUNTY COORDINATE SYSTEM

Corner	Northing	Easting	Elevation
	302757.56	720885.445	
Control Station Name			

City/Village/Town of Wellington  
 County of Monroe