

VERNON COUNTY CERTIFIED U.S. PUBLIC LAND SURVEY MONUMENT RECORD

INSTRUCTIONS: THIS RECORD SHALL SHOW THE LOCATION OF THE CORNER AND SHALL INCLUDE ALL OF THE FOLLOWING ELEMENTS (A-I)

(A) IDENTIFY THE CORNER BY REFERENCE TO THE U.S. PUBLIC LAND SURVEY SYSTEM

■ = CORNER MONUMENT RESTORED

WITNESSES TO CORNER LOCATION:

- 1) Robert M. Lampman
- 2) Jessica A. Zamor

VERNON COUNTY COORDINATES - NAD83(1991) - SURVEY FEET

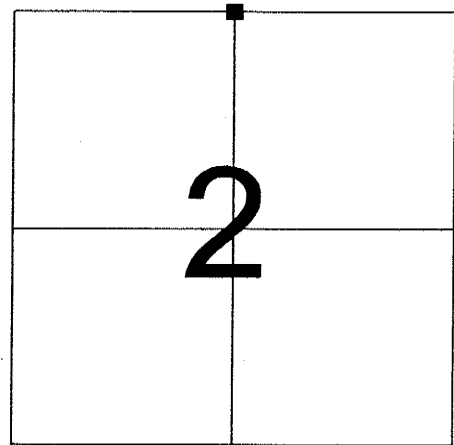
NORTHING: 211111.232

EASTING: 814734.310

MONROE COUNTY COORDINATES - NAD83(1991) - SURVEY FEET

NORTHING: 300120.621

EASTING: 718283.529



SECTION 2
TOWN 14 NORTH, RANGE 1 WEST

(B) DESCRIBE ANY RECORD EVIDENCE, MONUMENT EVIDENCE, OCCUPATIONAL EVIDENCE, TESTIMONIAL EVIDENCE OR ANY OTHER MATERIAL EVIDENCE YOU CONSIDERED, AND WHETHER THE MONUMENT WAS FOUND OR PLACED.

Accepted location of found existing 1-3/8" o.d. iron pipe at occupied fence corner. Replaced the existing iron pipe with a Vernon County Lunde Monument. Accepted the iron pipe and occupied fence corner as the best available evidence of the original corner location.

The accepted corner location is approximately 4.4 feet east and 5.2 feet north of a position determined by single proportionate measure between the corners to the east and west. Given the terrain, the close proximity of the two positions was accepted as evidence in support of the occupied corner location.

The north/south location of the occupied corner was also found to align with the Northwest corner of Section 2 and east/west occupation in the area of the NE corner of the NW 1/4 of the NW 1/4 of Section 2.

(Continued on Reverse)

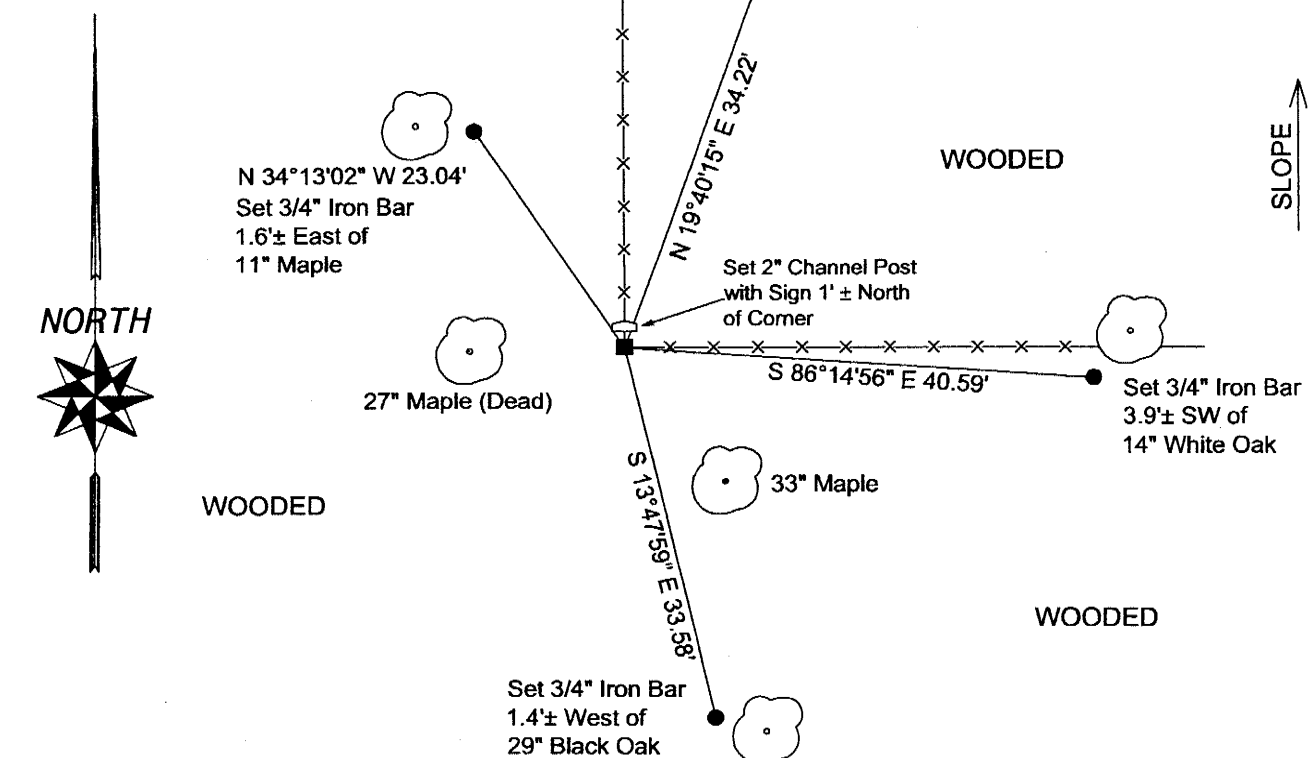
(C) IN THE PLAN VIEW DRAWING BELOW, PROVIDE REFERENCE TIES TO AT LEAST 4 WITNESS MONUMENTS OR, IF THE LOCATION IS WITHIN A MUNICIPALITY, TO AT LEAST 2 WITNESS MONUMENTS. (WITNESS MONUMENTS SHALL BE MADE OF CONCRETE, NATURAL STONE, IRON, OR OTHER EQUALLY DURABLE MATERIAL.) DESCRIBE WITNESS MONUMENTS.

(D) SHOW A PLAN VIEW DRAWING, DEPICTING THE RELEVANT MONUMENTS AND REFERENCE TIES, WHICH IS SUFFICIENTLY DETAILED TO ENABLE ACCURATE RELOCATION OF THE CORNER MONUMENT IF IT IS DISTURBED.

LEGEND

- SET VERNON COUNTY LUNDE MONUMENT IN PLACE OF EXISTING 1-3/8" o.d. IRON PIPE
- SET 3/4" X 24" ROUND IRON BAR FOR WITNESS MONUMENT

NOT TO SCALE



(E) DESCRIBE ANY MATERIAL DISCREPANCY BETWEEN THE LOCATION OF THE CORNER AS RESTORED OR REESTABLISHED AND THE LOCATION OF THAT CORNER AS PREVIOUSLY RESTORED OR REESTABLISHED BY DISTANCE AND DIRECTION. SHOW THE DISCREPANCY ON THE PLAN VIEW DRAWING UNDER (D), ABOVE. SHOW THE DISTANCES BETWEEN THE CORNER AS PREVIOUSLY RESTORED OR REESTABLISHED AND (1) THE CORNER AS RESTORED OR REESTABLISHED, AND (2) TO AT LEAST 2 OF THE WITNESS MONUMENTS AS SHOWN ON THE DRAWING IN (D), ABOVE.

N/A

(F) WAS THE CORNER RESTORED THROUGH ACCEPTANCE OF (1) AN OBLITERATED EVIDENCE LOCATION, OR (2) A FOUND PERPETUATED LOCATION?

(2) A FOUND PERPETUATED LOCATION

(G & H) WAS THE CORNER REESTABLISHED THROUGH LOST CORNER PROPORTIONATE METHODS? IF SO SHOW THE METHOD, INCLUDING THE DIRECTIONS AND DISTANCES TO OTHER PUBLIC LAND SURVEY CORNERS USED AS EVIDENCE OR USED FOR PROPORTIONING IN DETERMINING THE CORNER LOCATION.

N/A

(**) ANY ADDITIONAL INFORMATION RELATED TO CORNER LOCATION

SECTION (B) CONTINUED FROM REVERSE

Visited the NE corner of the NW 1/4 of the NE 1/4 of Section 2 (corner previously monumented by James Carroll) in search of evidence to assist in determining this corner location. Occupation at said forty corner proved to be too far east and too far south and was of little or no assistance. Said occupied corner being located in a steep and rocky valley.

Careful consideration was given to two maple trees as shown on the sketch on the reverse side of said sheet. Both Holden and Ristow called for maple witnesses at this corner. Searched for evidence of any monument that would coincide with one or both of said trees as a witness and found none. Found no apparent scars on said maples. Bored the living tree and the results of the boring were somewhat inconclusive. It appeared that the living maple could be of sufficient maturity to have been in the area at the time of the resurveys. However, it was too difficult to determine if the maple would have been of the recorded diameter at the time of the resurveys. None of the recorded witness measurements coincided with the existing maple trees in a fashion that agreed with occupational evidence. Therefore, given the lack of supportive evidence and the possibility that the maples were not of record size at the time of the resurveys, they were dismissed from consideration as witnesses.

CORNER HISTORY:

-Original government corner location established by Uriah Biggs in 1845.

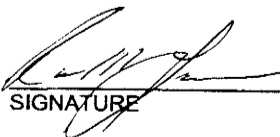
-Fred A. Holden subdivided Section 35, T15N, R1W in April of 1901. Holden gives two maple witnesses for the corner. Holden's survey does not include notations of any evidence found at this corner. It would seem that Holden reestablished the corner location by measurement.

-Alex Ristow prepared a subdivision of Section 2, T14N, R1W in May of 1905. Ristow's survey includes no notations as to evidence, original or otherwise, found at the corner. Ristow lists a maple witness for the corner that does not correspond to either of the maple witnesses listed by Holden.

-James J. Carroll shows a 1" iron pipe set at the corner on a survey located in part of Section 32, T15N, R1W and dated December 14, 1996.

AFFIX LAND SURVEYOR SEAL

(I) I, ROBERT M. LAMPMAN, CERTIFY THAT THE LOCATION SHOWN ON THIS RECORD WAS DETERMINED BY ME OR UNDER MY DIRECTION AND CONTROL AND THAT THIS U.S. PUBLIC LAND SURVEY MONUMENT RECORD IS CORRECT AND COMPLETE TO THE BEST OF MY KNOWLEDGE AND BELIEF.


SIGNATURE

3-10-04
DATE

