

VERNON COUNTY CERTIFIED U.S. PUBLIC LAND SURVEY MONUMENT RECORD

INSTRUCTIONS: THIS RECORD SHALL SHOW THE LOCATION OF THE CORNER AND SHALL INCLUDE ALL OF THE FOLLOWING ELEMENTS (A-I)

(A) IDENTIFY THE CORNER BY REFERENCE TO THE U.S. PUBLIC LAND SURVEY SYSTEM

■ = CORNER MONUMENT RESTORED

WITNESSES TO CORNER LOCATION:

- 1) Robert M. Lampman
- 2) Jessica A. Zamor

VERNON COUNTY COORDINATES - NAD83(1991) - SURVEY FEET

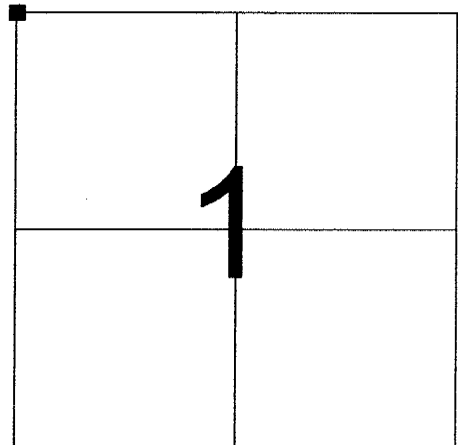
NORTHING: 211125.411

EASTING: 817363.875

MONROE COUNTY COORDINATES - NAD83(1991) - SURVEY FEET

NORTHING: 300130.364

EASTING: 720913.141



**SECTION 1
TOWN 14 NORTH, RANGE 1 WEST**

(B) DESCRIBE ANY RECORD EVIDENCE, MONUMENT EVIDENCE, OCCUPATIONAL EVIDENCE, TESTIMONIAL EVIDENCE OR ANY OTHER MATERIAL EVIDENCE YOU CONSIDERED, AND WHETHER THE MONUMENT WAS FOUND OR PLACED.

Accepted location of existing Harrison Monument. The existing Harrison Monument was placed by William C. Jung in January of 1983. Jung set the Harrison Monument in the place of a found sleigh shoe. Jung's acceptance of the found sleigh shoe was supported by witness testimony as to the history of the sleigh shoe.

(See reverse side for corner history.)

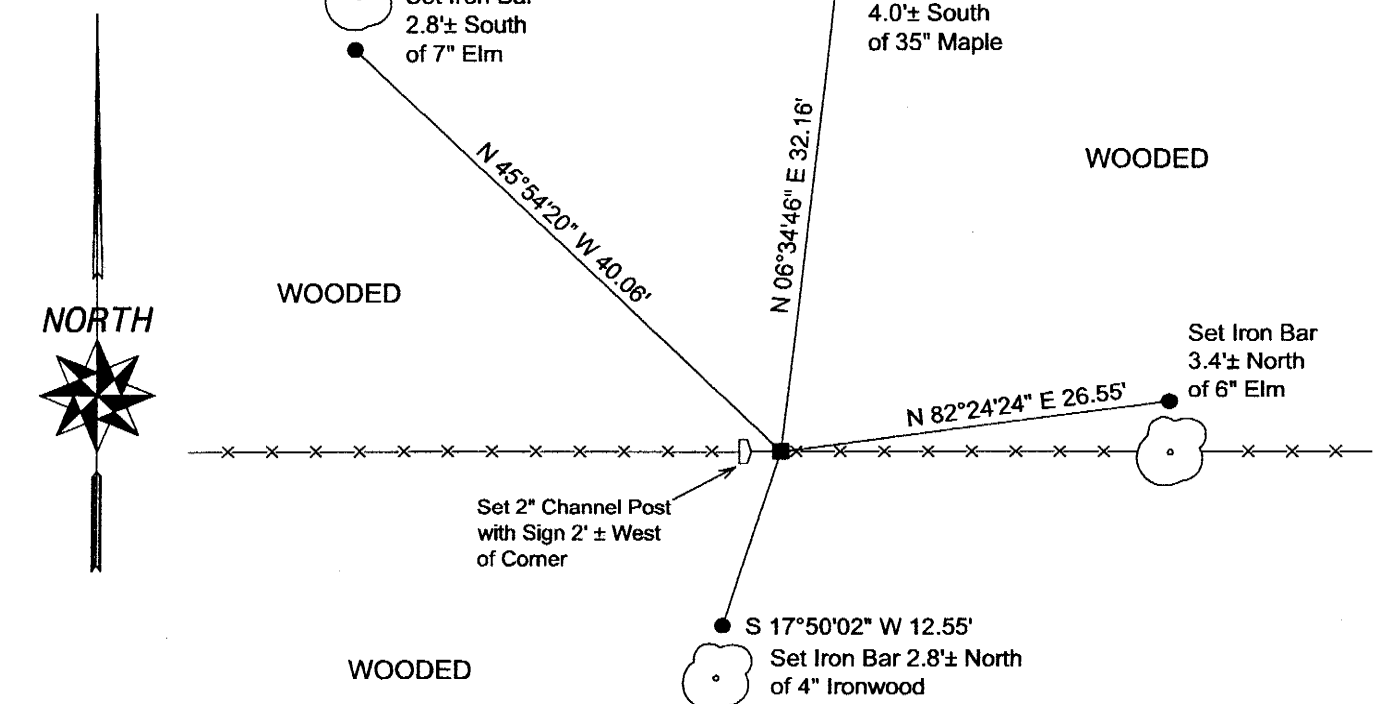
(C) IN THE PLAN VIEW DRAWING BELOW, PROVIDE REFERENCE TIES TO AT LEAST 4 WITNESS MONUMENTS OR, IF THE LOCATION IS WITHIN A MUNICIPALITY, TO AT LEAST 2 WITNESS MONUMENTS. (WITNESS MONUMENTS SHALL BE MADE OF CONCRETE, NATURAL STONE, IRON, OR OTHER EQUALLY DURABLE MATERIAL.) DESCRIBE WITNESS MONUMENTS.

(D) SHOW A PLAN VIEW DRAWING, DEPICTING THE RELEVANT MONUMENTS AND REFERENCE TIES, WHICH IS SUFFICIENTLY DETAILED TO ENABLE ACCURATE RELOCATION OF THE CORNER MONUMENT IF IT IS DISTURBED.

LEGEND

- FOUND EXISTING CAST IRON HARRISON MONUMENT
- SET 3/4" X 24" ROUND IRON BAR FOR WITNESS MONUMENT

NOT TO SCALE



(E) DESCRIBE ANY MATERIAL DISCREPANCY BETWEEN THE LOCATION OF THE CORNER AS RESTORED OR REESTABLISHED AND THE LOCATION OF THAT CORNER AS PREVIOUSLY RESTORED OR REESTABLISHED BY DISTANCE AND DIRECTION. SHOW THE DISCREPANCY ON THE PLAN VIEW DRAWING UNDER (D), ABOVE. SHOW THE DISTANCES BETWEEN THE CORNER AS PREVIOUSLY RESTORED OR REESTABLISHED AND (1) THE CORNER AS RESTORED OR REESTABLISHED, AND (2) TO AT LEAST 2 OF THE WITNESS MONUMENTS AS SHOWN ON THE DRAWING IN (D), ABOVE.

N/A

(F) WAS THE CORNER RESTORED THROUGH ACCEPTANCE OF (1) AN OBLITERATED EVIDENCE LOCATION, OR (2) A FOUND PERPETUATED LOCATION?

(2) A FOUND PERPETUATED LOCATION

(G & H) WAS THE CORNER REESTABLISHED THROUGH LOST CORNER PROPORTIONATE METHODS? IF SO SHOW THE METHOD, INCLUDING THE DIRECTIONS AND DISTANCES TO OTHER PUBLIC LAND SURVEY CORNERS USED AS EVIDENCE OR USED FOR PROPORTIONING IN DETERMINING THE CORNER LOCATION.

N/A

(**) ANY ADDITIONAL INFORMATION RELATED TO CORNER LOCATION

CORNER HISTORY:

-Original government corner location established by Uriah Biggs in 1845.

-Fred A. Holden from Monroe County prepared a subdivision of Section 35, T15N, R1W in April of 1901. On this survey Holden lists the corner as "iron bar at corner" and "placed by LaRue".

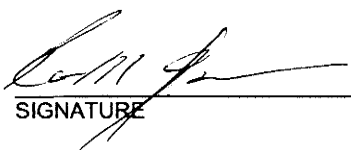
-Alex Ristow prepared a survey of the North 1/2 of Section 1, T14N, R1W in May of 1906. Ristow lists "Monroe" next to the corner location.

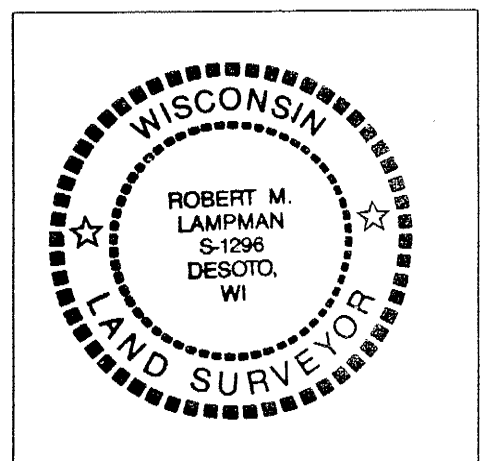
-William C. Jung placed a Harrison Monument at the corner and prepared a tie sheet dated January 27, 1983. Jung placed the Harrison monument at the location of a found sleigh shoe. Jung's acceptance of the found sleigh shoe was supported by witness testimony regarding its history.

-Jessica A. Zamor shows an existing Harrison Monument at the corner on a data sheet for Section 1, T14N, R1W dated September 18, 2002.

AFFIX LAND SURVEYOR SEAL

(I) I, ROBERT M. LAMPMAN, CERTIFY THAT THE LOCATION SHOWN ON THIS RECORD WAS DETERMINED BY ME OR UNDER MY DIRECTION AND CONTROL AND THAT THIS U.S. PUBLIC LAND SURVEY MONUMENT RECORD IS CORRECT AND COMPLETE TO THE BEST OF MY KNOWLEDGE AND BELIEF.

 3-10-04
SIGNATURE DATE



I, William C. Jung, do hereby certify that on the 17th day of September 1982, I found (evidence) ~~no evidence~~ of the Southwest corner of Section 36, T 15 N, R 1 W Fourth Principal Meridian, and I re-established said corner according to the Wisconsin Statutes as shown and described hereon.

Dated this 27th day of Jan. 1983.

William C. Jung
Deputy County Surveyor
Title

History of corner establishment since Original Government Survey

In April of 1901, Holden shows an iron bar at the corner. The iron bar was set by LaRue. In April of 1903, Older (from Vernon County), shows the original government corner at this corner. In May of 1906, Ristow (from Vernon County), shows this corner being in, and the corner as being set by a surveyor from Monroe County.

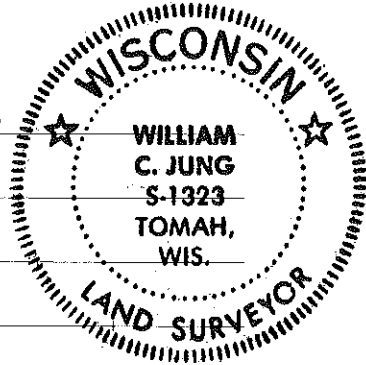
Description of corner evidence found:

Old Mr. Satona, a local landowner, told me that as a boy his father showed him an iron that had been placed at the section corner by a surveyor. Mr. Satona told me where to look, and sure enough I found the marker he described. When I showed it to him later, he identified it as the marker. This marker was a sleigh shoe, typical of survey monuments set around the turn of the century. I replaced it with a Harrison marker. This section corner fits all the evidence found along the South line of Section 36 very well. I took measurements to the existing evidence at the SW, S1/16SW, S1/4, and S1/16SE corners. (The SE had been destroyed.)

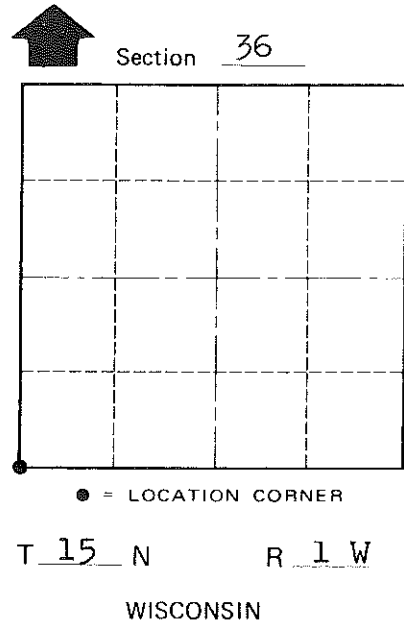
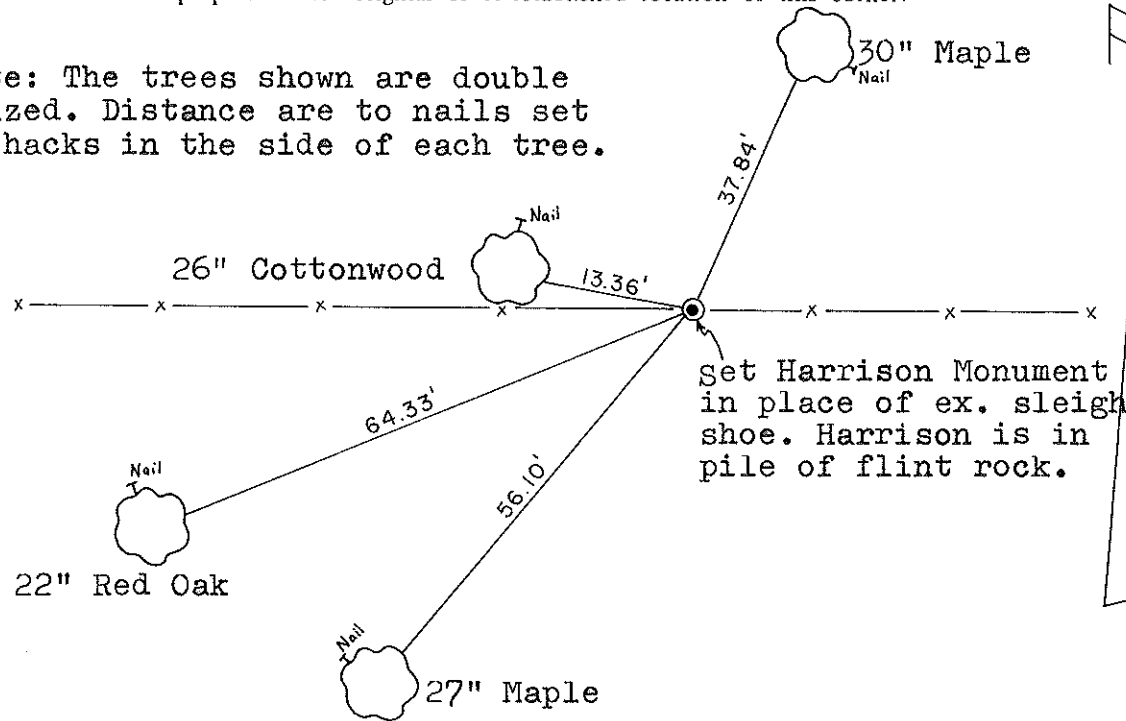
Description of corner and witness monuments, references and accessories used to perpetuate the original or re-established location of this corner:

Witnesses to corner location:

William C. Jung
Bryan H. Meyer



Note: The trees shown are double blazed. Distance are to nails set in hacks in the side of each tree.



Approved: HARLEY A. SIME
MONROE CO. SURVEYOR

SURVEY CONTROL ORDER

Horizontal	_____
Vertical	_____

WISCONSIN COORDINATE SYSTEM

Corner	East (X)	North (Y)	Elevation (Z)	Zone
Control Sta. Name				

~~City, Village or~~ Town of Wellington
County of Monroe

COUNTY SURVEYOR FORM NO. 1