

CERTIFIED LAND CORNER

CERTIFICATE

History of corner establishment since Original Government Survey

I, Richard T. Blakeslee, do hereby certify that on the 2nd day of July, 2012, I found (evidence) ~~(no evidence)~~ of the West 1/4 corner of Section 35, T 15 N, R 01W Fourth principle Meridian, and I re-established said corner according to the Wisconsin Statutes as shown and described hereon.

County Surveyor Holden used this corner in April of 1901 to subdivide Section 35. Holden's notes state that he made a new bearing tree at that time which was recorded as a 6" Jack Oak, S3°W, 16 links or 10.56'. We found an 18" Jack Oak, S3°W, 10.5' from a very old fence corner post. We accepted this evidence as being the best evidence of this corner's original position and monumented same.

Dated this 10 day of July, 2012

Richard T. Blakeslee

NOTE:

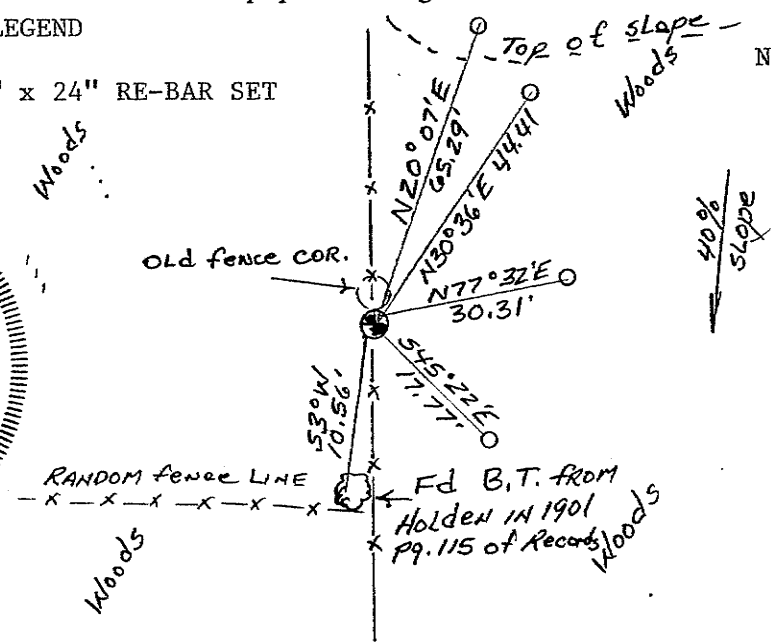
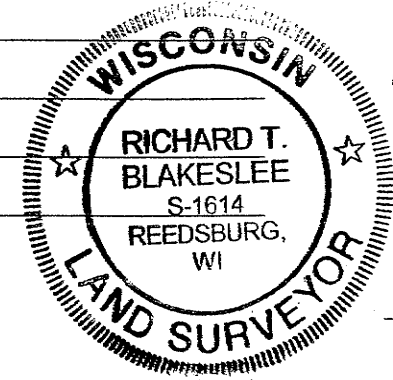
Surveyor James Carroll has done several surveys in Section 35 which required the use of this corner. Carroll's location for this corner is approx. 12' North of our corner.

Richard T. Blakeslee R.L.S.
Title

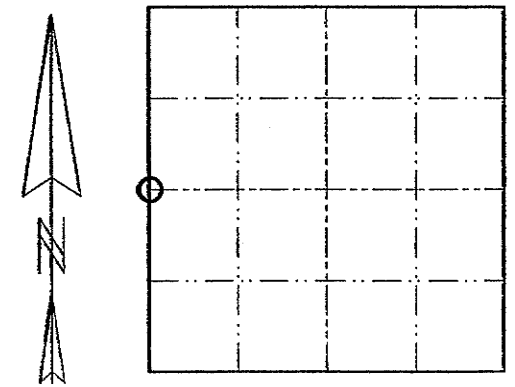
Description of corner and witness monuments, references and accessories used to perpetuate the original or re-established location of this corner.

Witnesses to corner location:
Richard T. Blakeslee
Josh Murphy

LEGEND
3/4" x 24" RE-BAR SET



NOTE: 1" x 24" IRON ROD SET Section 35 FOR CORNER.



BEARINGS ARE REFERENCED TO THE MONROE COUNTY CO-X SYSTEM. T 15 N R 1W WISCONSIN

SURVEY CONTROL ORDER

Horizontal
Vertical

MONROE COUNTY COORDINATE SYSTEM

Corner	Northing	Easting	Elevation
W1/4 35-15-1W	302767.42	715572.09	
Control Station Name			

City, Village or Town of Wellington
County of Monroe