

# VERNON COUNTY CERTIFIED U.S. PUBLIC LAND SURVEY MONUMENT RECORD

INSTRUCTIONS: THIS RECORD SHALL SHOW THE LOCATION OF THE CORNER AND SHALL INCLUDE ALL OF THE FOLLOWING ELEMENTS (A-I)

(A) IDENTIFY THE CORNER BY REFERENCE TO THE U.S. PUBLIC LAND SURVEY SYSTEM

■ = CORNER MONUMENT RESTORED

WITNESSES TO CORNER LOCATION:

- 1) Robert M. Lampman
- 2) Jessica A. Zamor

VERNON COUNTY COORDINATES - NAD83(1991) - SURVEY FEET

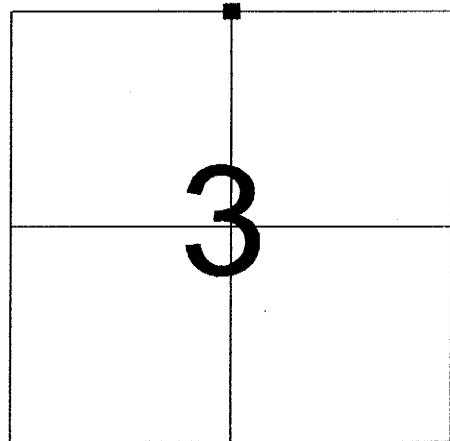
NORTHING: 211065.548

EASTING: 809471.761

MONROE COUNTY COORDINATES - NAD83(1991) - SURVEY FEET

NORTHING: 300083.822

EASTING: 713020.855



SECTION 3  
TOWN 14 NORTH, RANGE 1 WEST

(B) DESCRIBE ANY RECORD EVIDENCE, MONUMENT EVIDENCE, OCCUPATIONAL EVIDENCE, TESTIMONIAL EVIDENCE OR ANY OTHER MATERIAL EVIDENCE YOU CONSIDERED, AND WHETHER THE MONUMENT WAS FOUND OR PLACED.

Accepted location of existing 1-3/8" o.d. iron pipe at the occupied fence corner as the best available evidence of the original corner location. Replaced existing pipe with a Vernon County Lunde Monument.

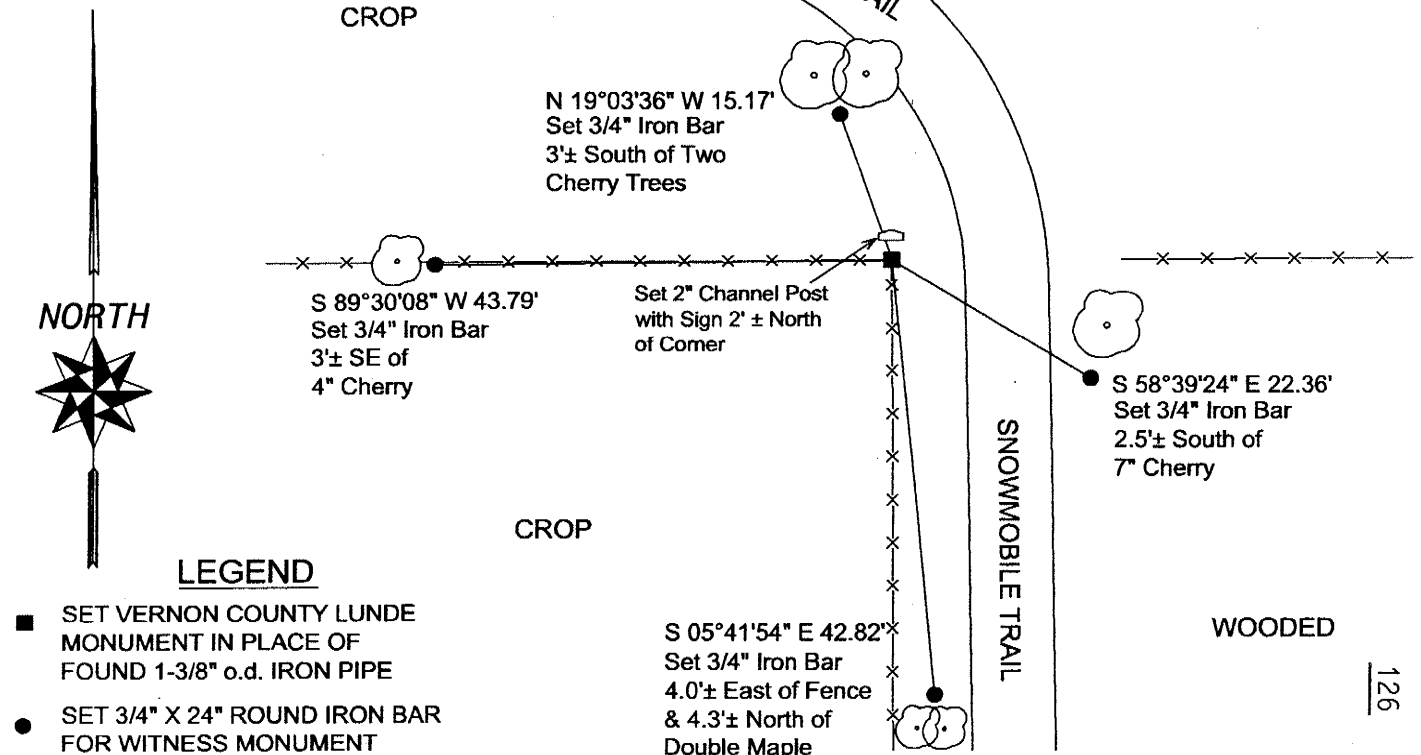
Accepted corner location falls only 2.63 feet north of a straight line between the Northeast and Northwest corners of Section 3. North/South location of the corner is also verified by a strong occupied line running west from the corner as well as remains of occupation at the Northwest corner of the NE 1/4 of the NE 1/4 of Section 3.

The accepted corner location is 7.98 feet east of an equal proration of distance between the Northeast and Northwest corners of Section 3. However, W.H.Knowler prepared a resurvey of Section 3 in April of 1898. On said survey there is included witness testimony as to the original location of this corner. The accepted location of this corner falls only 1.3± westerly of a position determined by a proration of Knowler's measured distances. Knowler measured 2650.06 feet to the Northwest corner of Section 3 and 2631.42 feet to the Northeast corner of Section 3. As per the accepted corner location as shown hereon, said distances measure 2640.38 feet and 2624.42 feet respectively.

(C) IN THE PLAN VIEW DRAWING BELOW, PROVIDE REFERENCE TIES TO AT LEAST 4 WITNESS MONUMENTS OR, IF THE LOCATION IS WITHIN A MUNICIPALITY, TO AT LEAST 2 WITNESS MONUMENTS. (WITNESS MONUMENTS SHALL BE MADE OF CONCRETE, NATURAL STONE, IRON, OR OTHER EQUALLY DURABLE MATERIAL.) DESCRIBE WITNESS MONUMENTS.

(D) SHOW A PLAN VIEW DRAWING, DEPICTING THE RELEVANT MONUMENTS AND REFERENCE TIES, WHICH IS SUFFICIENTLY DETAILED TO ENABLE ACCURATE RELOCATION OF THE CORNER MONUMENT IF IT IS DISTURBED.

NOT TO SCALE



Corner No. 21501340020

(E) DESCRIBE ANY MATERIAL DISCREPANCY BETWEEN THE LOCATION OF THE CORNER AS RESTORED OR REESTABLISHED AND THE LOCATION OF THAT CORNER AS PREVIOUSLY RESTORED OR REESTABLISHED BY DISTANCE AND DIRECTION. SHOW THE DISCREPANCY ON THE PLAN VIEW DRAWING UNDER (D), ABOVE. SHOW THE DISTANCES BETWEEN THE CORNER AS PREVIOUSLY RESTORED OR REESTABLISHED AND (1) THE CORNER AS RESTORED OR REESTABLISHED, AND (2) TO AT LEAST 2 OF THE WITNESS MONUMENTS AS SHOWN ON THE DRAWING IN (D), ABOVE.

N/A

(F) WAS THE CORNER RESTORED THROUGH ACCEPTANCE OF (1) AN OBLITERATED EVIDENCE LOCATION, OR (2) A FOUND PERPETUATED LOCATION?

(2) A FOUND PERPETUATED LOCATION

(G & H) WAS THE CORNER REESTABLISHED THROUGH LOST CORNER PROPORTIONATE METHODS? IF SO SHOW THE METHOD, INCLUDING THE DIRECTIONS AND DISTANCES TO OTHER PUBLIC LAND SURVEY CORNERS USED AS EVIDENCE OR USED FOR PROPORTIONING IN DETERMINING THE CORNER LOCATION.

N/A

(\*\*) ANY ADDITIONAL INFORMATION RELATED TO CORNER LOCATION

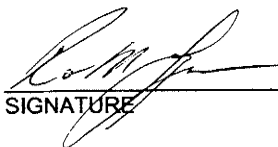
CORNER HISTORY:

-Original government corner location established by Uriah Biggs in 1845.

-W.H.Knower subdivided Section 3, T14N, R1W in April of 1898. Knower's survey includes witness testimony regarding this corner. The witness testimony is followed by mention of remains of a sugar as per field notes found. Knower also recorded one new white oak witness for the corner.

-Patrick Carroll accepted fence corner as best available evidence of original section corner location, set a 1" x 24" iron pipe and prepared a tie sheet dated September 6, 2000. Patrick Carroll's survey project was located in part of Section 3, T14N, R1W.

(I) I, ROBERT M. LAMPMAN, CERTIFY THAT THE LOCATION SHOWN ON THIS RECORD WAS DETERMINED BY ME OR UNDER MY DIRECTION AND CONTROL AND THAT THIS U.S. PUBLIC LAND SURVEY MONUMENT RECORD IS CORRECT AND COMPLETE TO THE BEST OF MY KNOWLEDGE AND BELIEF.

  
SIGNATURE

3-10-04  
DATE

AFFIX LAND SURVEYOR SEAL

