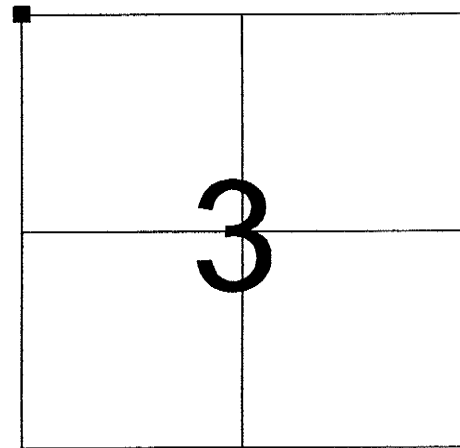


VERNON COUNTY CERTIFIED U.S. PUBLIC LAND SURVEY MONUMENT RECORD

INSTRUCTIONS: THIS RECORD SHALL SHOW THE LOCATION OF THE CORNER AND SHALL INCLUDE ALL OF THE FOLLOWING ELEMENTS (A-I)



**SECTION 3
TOWN 14 NORTH, RANGE 1 WEST**

(A) IDENTIFY THE CORNER BY REFERENCE TO THE U.S. PUBLIC LAND SURVEY SYSTEM

■ = CORNER MONUMENT RESTORED

WITNESSES TO CORNER LOCATION:

- 1) Robert M. Lampman
- 2) Jessica A. Zamor

VERNON COUNTY COORDINATES - NAD83(1991) - SURVEY FEET

NORTHING: 211039.146
EASTING: 806831.517

MONROE COUNTY COORDINATES - NAD83(1991) - SURVEY FEET

NORTHING: 300061.883
EASTING: 710380.542

(B) DESCRIBE ANY RECORD EVIDENCE, MONUMENT EVIDENCE, OCCUPATIONAL EVIDENCE, TESTIMONIAL EVIDENCE OR ANY OTHER MATERIAL EVIDENCE YOU CONSIDERED, AND WHETHER THE MONUMENT WAS FOUND OR PLACED.

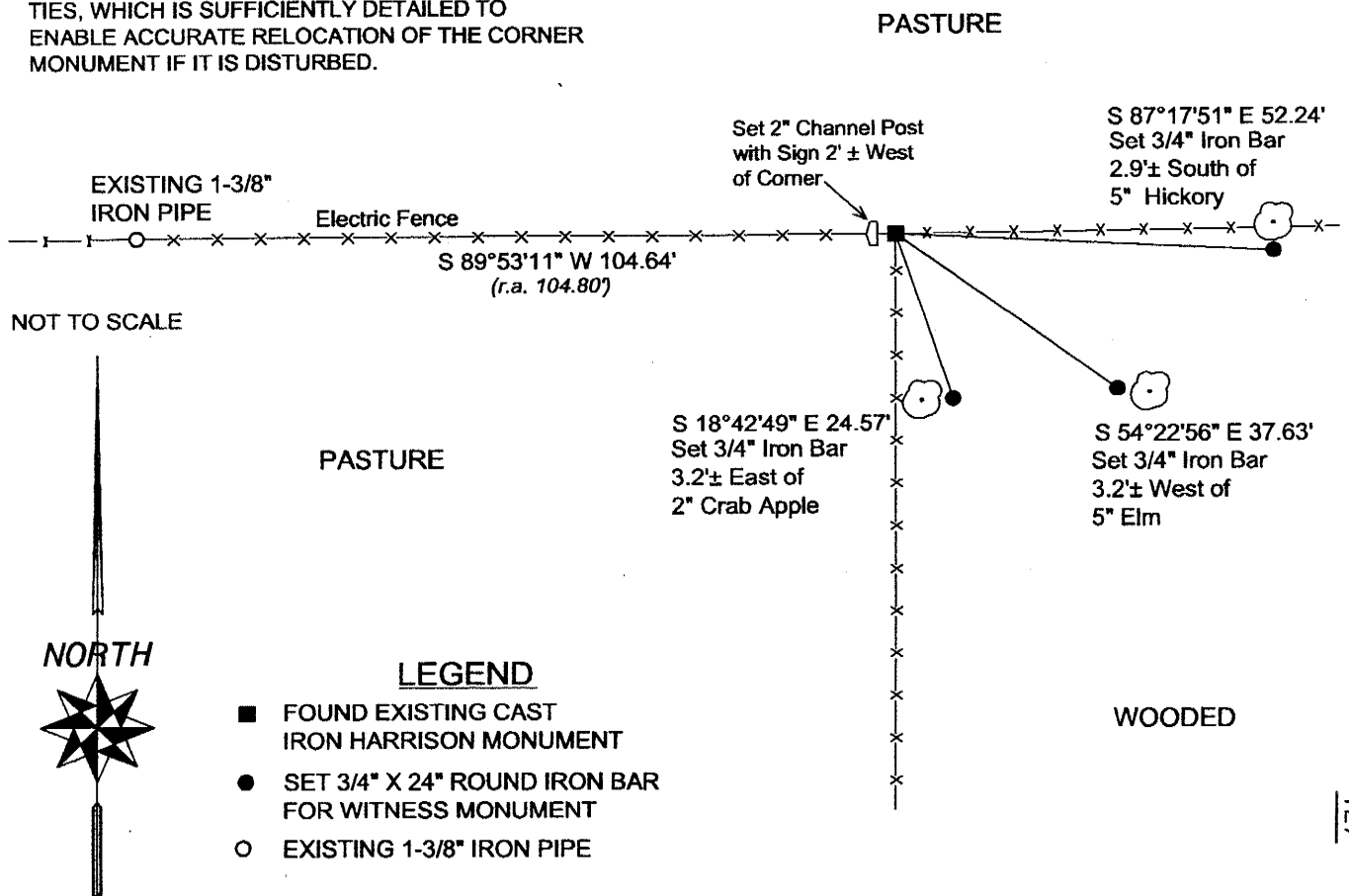
Accepted existing Harrison Monument at fence corner as best available evidence of original section corner location.

Existing monument fits well with occupational evidence along the North line of Section 3. Based on this corner location and the NE corner of Section 3, occupation at the North 1/4 corner of Section 3 falls within 1.3 feet of a proration of Knowler's record distances along the North line of Section 3 and occupation at said North 1/4 corner also falls only 2.63 feet north of a straight line between section corners.

Running westerly, Gary L. Dechant utilized a proration of distance between this corner and the N 1/4 corner of Section 5 to reestablish the remaining corners along the North line of Section 4. The resulting distances running westerly are all within 2 feet of original record of 2640 feet. The method of proration utilized by Dechant follows the method utilized by W.H.Knowler in April of 1898 to reestablish corners along the North line of Section 4.

(C) IN THE PLAN VIEW DRAWING BELOW, PROVIDE REFERENCE TIES TO AT LEAST 4 WITNESS MONUMENTS OR, IF THE LOCATION IS WITHIN A MUNICIPALITY, TO AT LEAST 2 WITNESS MONUMENTS. (WITNESS MONUMENTS SHALL BE MADE OF CONCRETE, NATURAL STONE, IRON, OR OTHER EQUALLY DURABLE MATERIAL.) DESCRIBE WITNESS MONUMENTS.

(D) SHOW A PLAN VIEW DRAWING, DEPICTING THE RELEVANT MONUMENTS AND REFERENCE TIES, WHICH IS SUFFICIENTLY DETAILED TO ENABLE ACCURATE RELOCATION OF THE CORNER MONUMENT IF IT IS DISTURBED.



(E) DESCRIBE ANY MATERIAL DISCREPANCY BETWEEN THE LOCATION OF THE CORNER AS RESTORED OR REESTABLISHED AND THE LOCATION OF THAT CORNER AS PREVIOUSLY RESTORED OR REESTABLISHED BY DISTANCE AND DIRECTION. SHOW THE DISCREPANCY ON THE PLAN VIEW DRAWING UNDER (D), ABOVE. SHOW THE DISTANCES BETWEEN THE CORNER AS PREVIOUSLY RESTORED OR REESTABLISHED AND (1) THE CORNER AS RESTORED OR REESTABLISHED, AND (2) TO AT LEAST 2 OF THE WITNESS MONUMENTS AS SHOWN ON THE DRAWING IN (D), ABOVE.

N/A

(F) WAS THE CORNER RESTORED THROUGH ACCEPTANCE OF (1) AN OBLITERATED EVIDENCE LOCATION, OR (2) A FOUND PERPETUATED LOCATION?

(2) A FOUND PERPETUATED LOCATION

(G & H) WAS THE CORNER REESTABLISHED THROUGH LOST CORNER PROPORTIONATE METHODS? IF SO SHOW THE METHOD, INCLUDING THE DIRECTIONS AND DISTANCES TO OTHER PUBLIC LAND SURVEY CORNERS USED AS EVIDENCE OR USED FOR PROPORTIONING IN DETERMINING THE CORNER LOCATION.

N/A

(**) ANY ADDITIONAL INFORMATION RELATED TO CORNER LOCATION

CORNER HISTORY:

-Original government corner location established by Uriah Biggs in 1845.

-W.H.Knowler subdivided Section 4, T14N, R1W in April of 1898. On said survey this corner is listed as government. No additional notation or witnesses for this corner are included.

-W.H.Knowler subdivided Section 3, T14N, R1W in April of 1898. This survey followed Knowler's survey in Section 4. Therefore the survey in Section 3 lists the West line of Section 3 as by former survey.

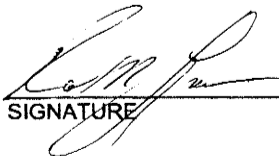
-Gary L. Dechant shows Cast Iron Harrison Monument to be set in place of railroad spike on Monroe County C.S.M. Volume 9, Page 2, Document No. 421422 dated September 23, 1992.

-Gary L. Dechant accepted the occupied fence corner as the best available evidence of the original corner location, placed a Harrison Monument at the corner and prepared a tie sheet dated January 6, 1993.

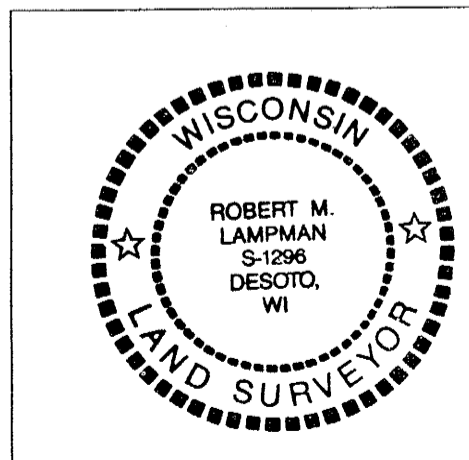
-Patrick Carroll shows an existing Harrison Monument at the corner on a survey located in part of Section 3, T14N, R1W and dated September 6, 2000.

AFFIX LAND SURVEYOR SEAL

(I) I, ROBERT M. LAMPMAN, CERTIFY THAT THE LOCATION SHOWN ON THIS RECORD WAS DETERMINED BY ME OR UNDER MY DIRECTION AND CONTROL AND THAT THIS U.S. PUBLIC LAND SURVEY MONUMENT RECORD IS CORRECT AND COMPLETE TO THE BEST OF MY KNOWLEDGE AND BELIEF.


SIGNATURE

3-10-04
DATE



CERTIFICATE

CERTIFIED LAND CORNER

21501330000

No. 127

I, Gary L. Dechant, do hereby certify that on the 5th day of January 1993, I found (evidence) (no evidence) of the SE corner of Section 33, T15 N, R1 W Fourth Principal Meridian, and I re-established said corner according to the Wisconsin Statutes as shown and described hereon.

Dated this 6th day of Jan. 1993.

Gary L. Dechant

Reg. Land Surveyor, S-1744

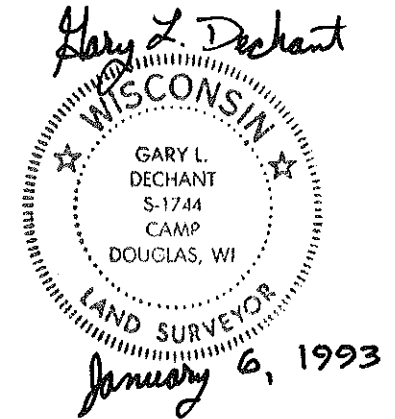
Title

History of corner establishment since Original Government Survey

No known history since the original government survey.

Description of corner evidence found:

Accepted fence corner as best available evidence.

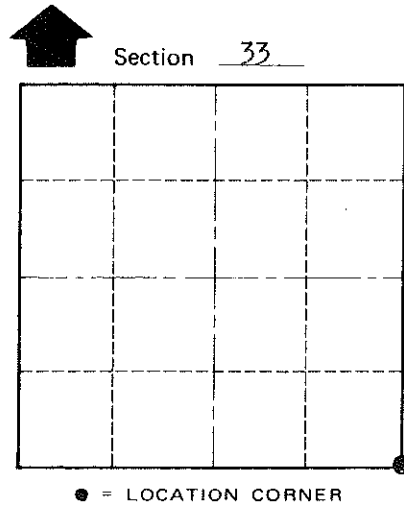
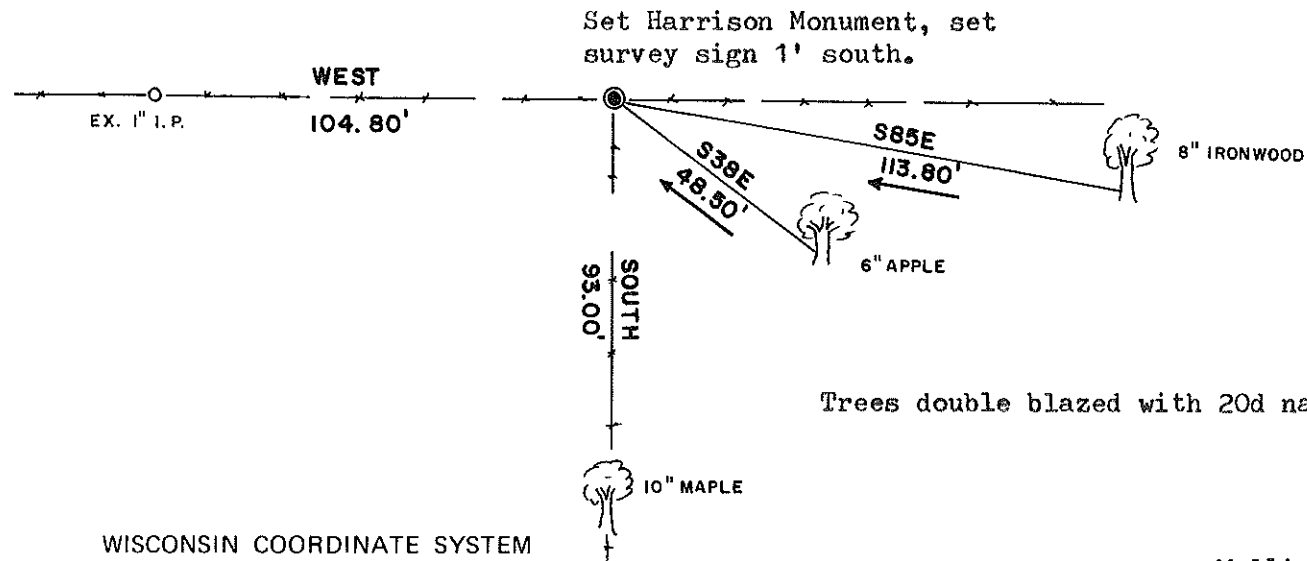


Description of corner and witness monuments, references and accessories used to perpetuate the original or re-established location of this corner:

Witnesses to corner location:

David E. Madison

Gary L. Dechant



T 15 N R 1 W

WISCONSIN

SURVEY CONTROL ORDER

Table with 2 rows: Horizontal, Vertical.

WISCONSIN COORDINATE SYSTEM

Table with 5 columns: Corner, East (X), North (Y), Elevation (Z), Zone. Row 1: Control Sta. Name.

City, Village or Town Wellington

County of Monroe

COUNTY SURVEYOR FORM NO. 1