

VERNON COUNTY CERTIFIED U.S. PUBLIC LAND SURVEY MONUMENT RECORD

INSTRUCTIONS: THIS RECORD SHALL SHOW THE LOCATION OF THE CORNER AND SHALL INCLUDE ALL OF THE FOLLOWING ELEMENTS (A-I)

(A) IDENTIFY THE CORNER BY REFERENCE TO THE U.S. PUBLIC LAND SURVEY SYSTEM

■ = CORNER MONUMENT RESTORED

WITNESSES TO CORNER LOCATION:

- 1) Robert M. Lampman
- 2) Jessica A. Zamor

VERNON COUNTY COORDINATES - NAD83(1991) - SURVEY FEET

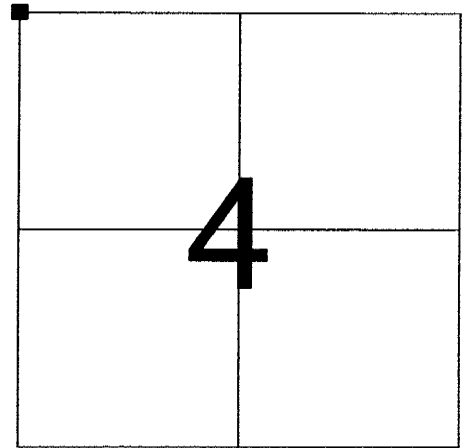
NORTHING: 211015.380

EASTING: 801553.827

MONROE COUNTY COORDINATES - NAD83(1991) - SURVEY FEET

NORTHING: 300047.043

EASTING: 705102.764



SECTION 4
TOWN 14 NORTH, RANGE 1 WEST

(B) DESCRIBE ANY RECORD EVIDENCE, MONUMENT EVIDENCE, OCCUPATIONAL EVIDENCE, TESTIMONIAL EVIDENCE OR ANY OTHER MATERIAL EVIDENCE YOU CONSIDERED, AND WHETHER THE MONUMENT WAS FOUND OR PLACED.

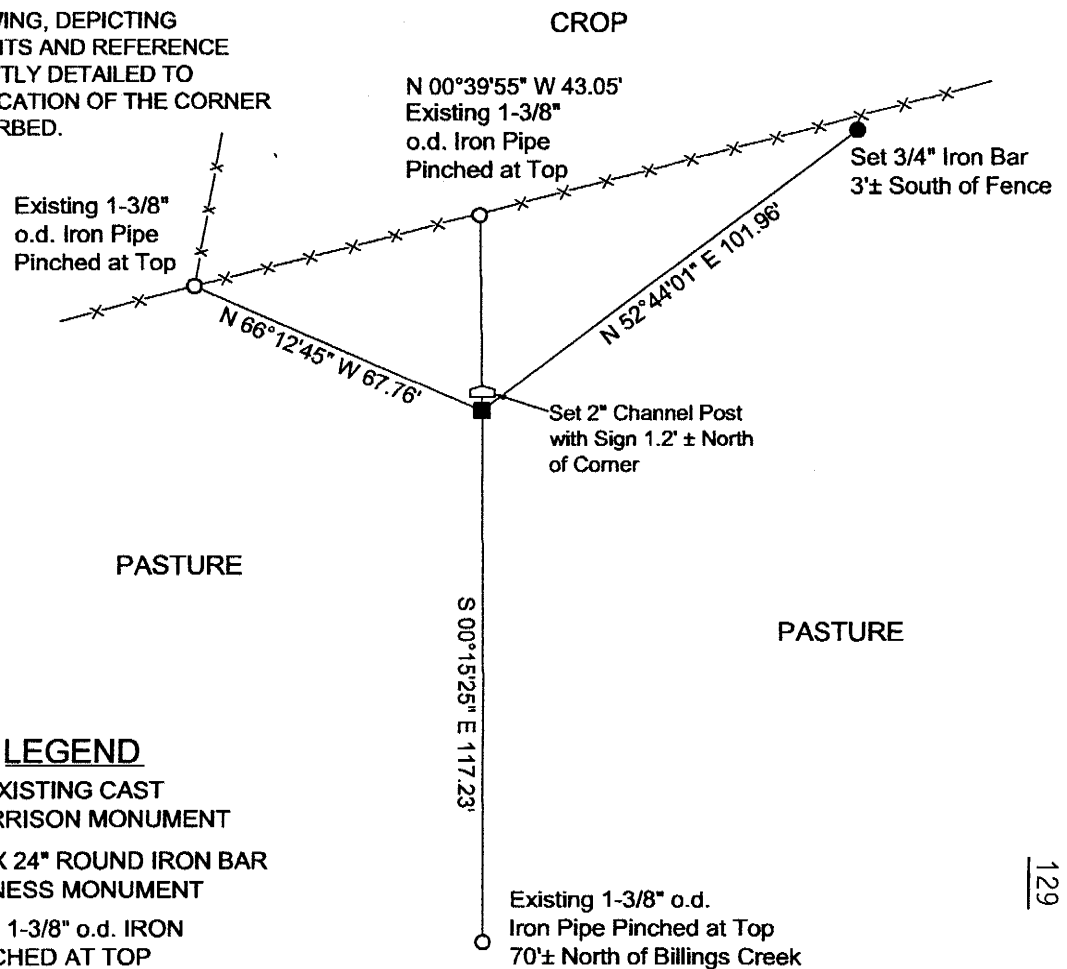
Accepted existing Harrison Monument at corner as best available evidence of original section corner location.

Existing Harrison Monument was established by Gary L. Dechant in 1993. Gary Dechant's method for reestablishing this corner location followings the method utilized by W.H.Knowler in 1898 to reestablish this corner location. See corner history on reverse side of this sheet for additional information.

(C) IN THE PLAN VIEW DRAWING BELOW, PROVIDE REFERENCE TIES TO AT LEAST 4 WITNESS MONUMENTS OR, IF THE LOCATION IS WITHIN A MUNICIPALITY, TO AT LEAST 2 WITNESS MONUMENTS. (WITNESS MONUMENTS SHALL BE MADE OF CONCRETE, NATURAL STONE, IRON, OR OTHER EQUALLY DURABLE MATERIAL.) DESCRIBE WITNESS MONUMENTS.

(D) SHOW A PLAN VIEW DRAWING, DEPICTING THE RELEVANT MONUMENTS AND REFERENCE TIES, WHICH IS SUFFICIENTLY DETAILED TO ENABLE ACCURATE RELOCATION OF THE CORNER MONUMENT IF IT IS DISTURBED.

NOT TO SCALE



LEGEND

- FOUND EXISTING CAST IRON HARRISON MONUMENT
- SET 3/4" X 24" ROUND IRON BAR FOR WITNESS MONUMENT
- EXISTING 1-3/8" o.d. IRON PIPE PINCHED AT TOP

(E) DESCRIBE ANY MATERIAL DISCREPANCY BETWEEN THE LOCATION OF THE CORNER AS RESTORED OR REESTABLISHED AND THE LOCATION OF THAT CORNER AS PREVIOUSLY RESTORED OR REESTABLISHED BY DISTANCE AND DIRECTION. SHOW THE DISCREPANCY ON THE PLAN VIEW DRAWING UNDER (D), ABOVE. SHOW THE DISTANCES BETWEEN THE CORNER AS PREVIOUSLY RESTORED OR REESTABLISHED AND (1) THE CORNER AS RESTORED OR REESTABLISHED, AND (2) TO AT LEAST 2 OF THE WITNESS MONUMENTS AS SHOWN ON THE DRAWING IN (D), ABOVE.

N/A

(F) WAS THE CORNER RESTORED THROUGH ACCEPTANCE OF (1) AN OBLITERATED EVIDENCE LOCATION, OR (2) A FOUND PERPETUATED LOCATION?

(2) A FOUND PERPETUATED LOCATION

(G & H) WAS THE CORNER REESTABLISHED THROUGH LOST CORNER PROPORTIONATE METHODS? IF SO SHOW THE METHOD, INCLUDING THE DIRECTIONS AND DISTANCES TO OTHER PUBLIC LAND SURVEY CORNERS USED AS EVIDENCE OR USED FOR PROPORTIONING IN DETERMINING THE CORNER LOCATION.

N/A

(**) ANY ADDITIONAL INFORMATION RELATED TO CORNER LOCATION

CORNER HISTORY:

-Original government corner location established by Uriah Biggs in 1845.

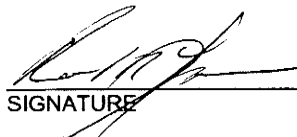
-C.M.Sterling utilized this corner as part of subdivision of Sections 5, 6, 7, 8 and 9 dated April of 1892. There are no witnesses or notations regarding the corner included on Sterling's survey.

-W.H.Knower subdivided Section 4 in April of 1898. This corner is listed as lost on Knower's survey. Knower reestablished the corner location by measurement between the Northeast corner of Section 4 and the N 1/4 corner of Section 5. Knower's survey does not list any witnesses established for this corner or describe any particular type of monument placed at the corner.

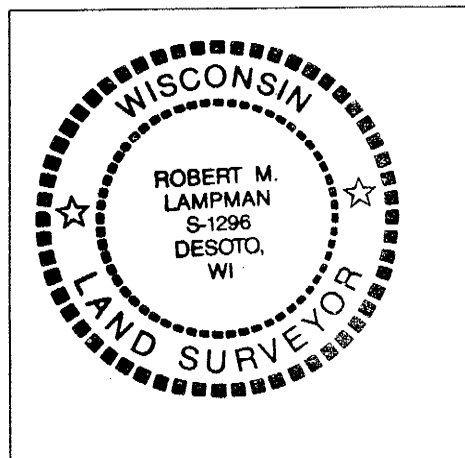
-Gary L. Dechant reestablished the corner location, placed a Harrison Monument and prepared a tie sheet dated January 6, 1993. Gary Dechant reestablished the east/west location of the corner by proration of distance between the Northeast corner of Section 4 and the North one-quarter corner of Section 5. The north/south location of the corner was established on line with the N 1/4 and NE corners of Section 4.

AFFIX LAND SURVEYOR SEAL

(I) I, ROBERT M. LAMPMAN, CERTIFY THAT THE LOCATION SHOWN ON THIS RECORD WAS DETERMINED BY ME OR UNDER MY DIRECTION AND CONTROL AND THAT THIS U.S. PUBLIC LAND SURVEY MONUMENT RECORD IS CORRECT AND COMPLETE TO THE BEST OF MY KNOWLEDGE AND BELIEF.


SIGNATURE

3-10-04
DATE



CERTIFICATE

CERTIFIED LAND CORNER

21501320000

No. 129

I, Gary L. Dechant, do hereby certify that on the 5th day of January 19 93, I found (evidence) (no evidence) of the SW corner of Section 33, T15 N, R 1 W Fourth Principal Meridian, and I re-established said corner according to the Wisconsin Statutes as shown and described hereon.

Dated this 6th day of Jan. 19 93.

Gary L. Dechant

Reg. Land Surveyor, S-1744

History of corner establishment since Original Government Survey

No known history since the original government survey.

Description of corner evidence found:

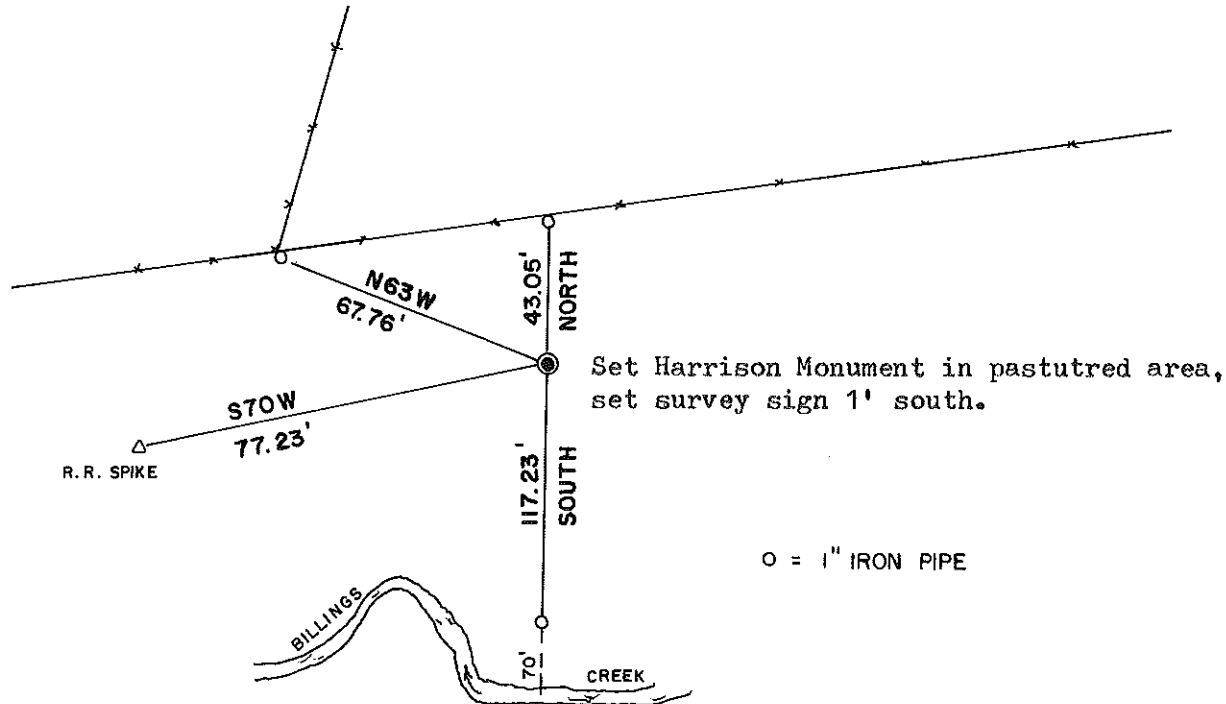
Set corner on line with S¼ and SE corners of section 33 at prorated distances between the SE corner of Section 33 and the S¼ corner of Section 32.

Description of corner and witness monuments, references and accessories used to perpetuate the original or re-established location of this corner:

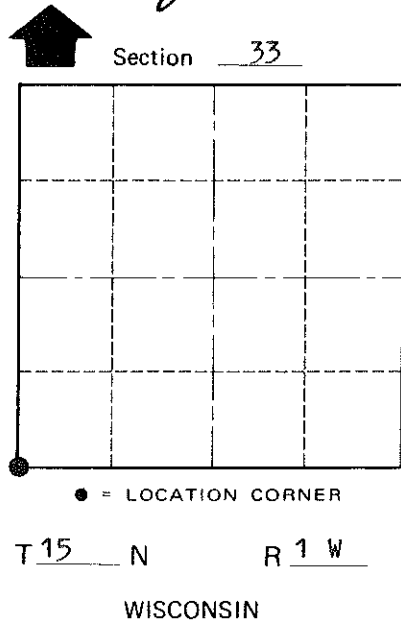
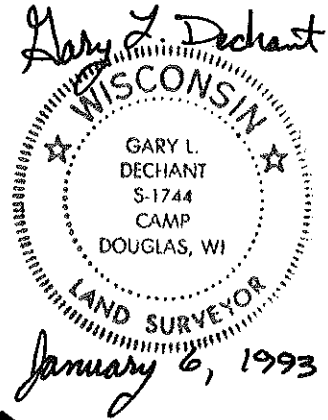
Witnesses to corner location:

David E. Madison

Gary L. Dechant



O = 1" IRON PIPE



COUNTY SURVEYOR FORM NO. 1

SURVEY CONTROL ORDER

Table with 2 rows: Horizontal, Vertical.

Table with 5 columns: Corner, East (X), North (Y), Elevation (Z), Zone.

WISCONSIN COORDINATE SYSTEM

City, Village or Town Wellington

County of Monroe