

# VERNON COUNTY CERTIFIED U.S. PUBLIC LAND SURVEY MONUMENT RECORD

INSTRUCTIONS: THIS RECORD SHALL SHOW THE LOCATION OF THE CORNER AND SHALL INCLUDE ALL OF THE FOLLOWING ELEMENTS (A-I)

(A) IDENTIFY THE CORNER BY REFERENCE TO THE U.S. PUBLIC LAND SURVEY SYSTEM

■ = CORNER MONUMENT RESTORED

WITNESSES TO CORNER LOCATION:

- 1) Robert M. Lampman
- 2) Jessica A. Zamor

VERNON COUNTY COORDINATES - NAD83(1991) - SURVEY FEET

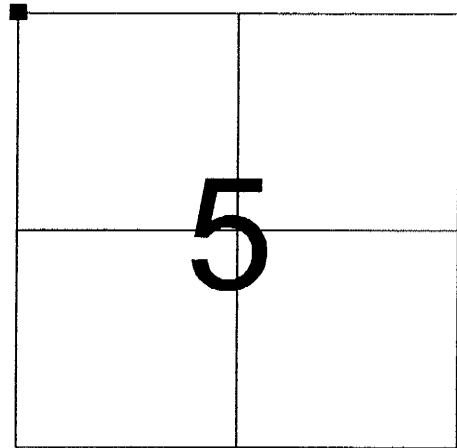
NORTHING: 210983.117

EASTING: 796292.415

MONROE COUNTY COORDINATES - NAD83(1991) - SURVEY FEET

NORTHING: 300023.688

EASTING: 699841.250



**SECTION 5  
TOWN 14 NORTH, RANGE 1 WEST**

(B) DESCRIBE ANY RECORD EVIDENCE, MONUMENT EVIDENCE, OCCUPATIONAL EVIDENCE, TESTIMONIAL EVIDENCE OR ANY OTHER MATERIAL EVIDENCE YOU CONSIDERED, AND WHETHER THE MONUMENT WAS FOUND OR PLACED.

Accepted existing True Cast Products Monument at occupied fence corner as best available evidence of original section corner location.

Existing monument was established by Gary L. Dechant in 1998. See corner history on reverse side of this sheet for additional information.

The accepted corner location falls only 5.59 feet north of a straight line between the North one-quarter corners of Sections 5 and 6.

The east/west location of the corner is supported by north/south occupation in the area of the NW corner of the NE 1/4 of the NE 1/4 of Section 6. The accepted corner is also only 3.26 feet easterly of being equal distance from the North one-quarter corners of Sections 5 and 6.

(C) IN THE PLAN VIEW DRAWING BELOW, PROVIDE REFERENCE TIES TO AT LEAST 4 WITNESS MONUMENTS OR, IF THE LOCATION IS WITHIN A MUNICIPALITY, TO AT LEAST 2 WITNESS MONUMENTS. (WITNESS MONUMENTS SHALL BE MADE OF CONCRETE, NATURAL STONE, IRON, OR OTHER EQUALLY DURABLE MATERIAL.) DESCRIBE WITNESS MONUMENTS.

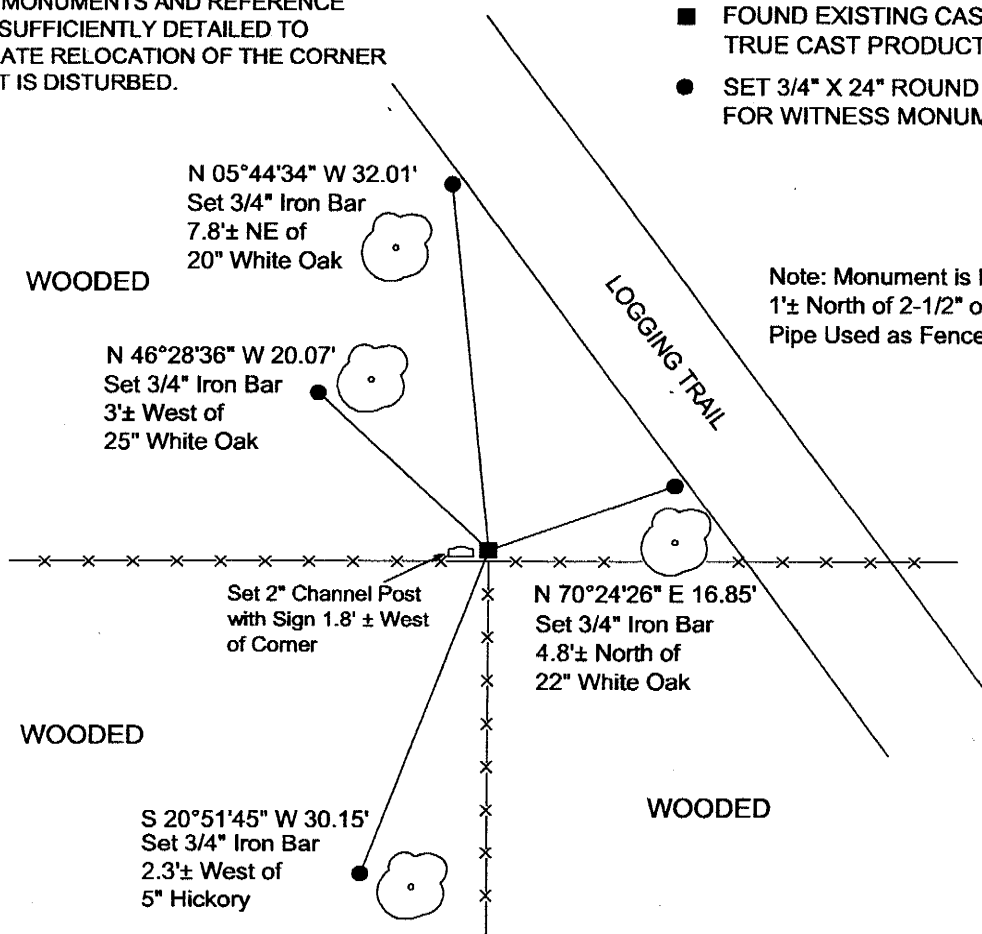
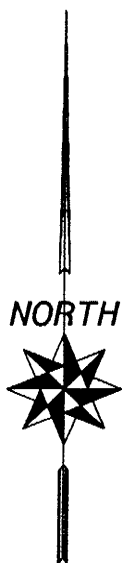
(D) SHOW A PLAN VIEW DRAWING, DEPICTING THE RELEVANT MONUMENTS AND REFERENCE TIES, WHICH IS SUFFICIENTLY DETAILED TO ENABLE ACCURATE RELOCATION OF THE CORNER MONUMENT IF IT IS DISTURBED.

### LEGEND

- FOUND EXISTING CAST IRON TRUE CAST PRODUCTS MONUMENT
- SET 3/4" X 24" ROUND IRON BAR FOR WITNESS MONUMENT

Note: Monument is Located 1± North of 2-1/2" o.d. Steel Pipe Used as Fence Corner Post

NOT TO SCALE



(E) DESCRIBE ANY MATERIAL DISCREPANCY BETWEEN THE LOCATION OF THE CORNER AS RESTORED OR REESTABLISHED AND THE LOCATION OF THAT CORNER AS PREVIOUSLY RESTORED OR REESTABLISHED BY DISTANCE AND DIRECTION. SHOW THE DISCREPANCY ON THE PLAN VIEW DRAWING UNDER (D), ABOVE. SHOW THE DISTANCES BETWEEN THE CORNER AS PREVIOUSLY RESTORED OR REESTABLISHED AND (1) THE CORNER AS RESTORED OR REESTABLISHED, AND (2) TO AT LEAST 2 OF THE WITNESS MONUMENTS AS SHOWN ON THE DRAWING IN (D), ABOVE.

N/A

(F) WAS THE CORNER RESTORED THROUGH ACCEPTANCE OF (1) AN OBLITERATED EVIDENCE LOCATION, OR (2) A FOUND PERPETUATED LOCATION?

(2) A FOUND PERPETUATED LOCATION

(G & H) WAS THE CORNER REESTABLISHED THROUGH LOST CORNER PROPORTIONATE METHODS? IF SO SHOW THE METHOD, INCLUDING THE DIRECTIONS AND DISTANCES TO OTHER PUBLIC LAND SURVEY CORNERS USED AS EVIDENCE OR USED FOR PROPORTIONING IN DETERMINING THE CORNER LOCATION.

N/A

(\*\*) ANY ADDITIONAL INFORMATION RELATED TO CORNER LOCATION

CORNER HISTORY:

-Original government corner location established by Uriah Biggs in 1845.

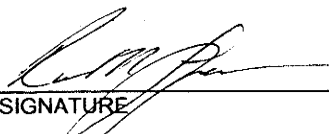
-C.M. Sterling prepared of subdivision of Sections 5, 6, 7, 8 and 9 dated April of 1892. Sterling lists one new Lind witness tree for the corner. It appears that Sterling found and renewed the government corner.

-Hamilton LaRue utilized the corner as part of a subdivision of Section 31, T15N, R1W dated June of 1897. LaRue notes finding broken down remains of original government elm witness and stump remains of original government cherry witness. Hamilton LaRue also makes note of the Lind witness by C.M. Sterling as listed above.

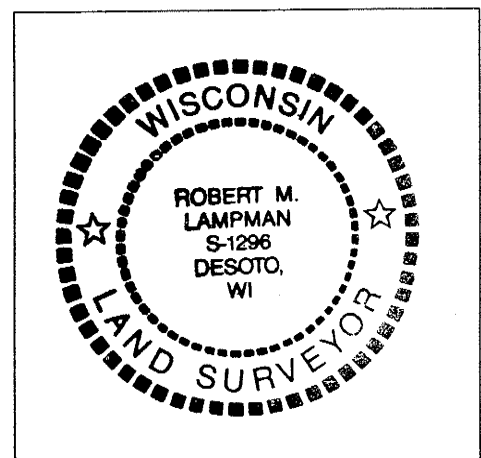
-Gary L. Dechant reestablished the corner location, placed a True Cast Products Monument and prepared a tie sheet dated December 1, 1998. Gary Dechant reestablished the corner location by acceptance of fence corner as best available evidence.

AFFIX LAND SURVEYOR SEAL

(I) I, ROBERT M. LAMPMAN, CERTIFY THAT THE LOCATION SHOWN ON THIS RECORD WAS DETERMINED BY ME OR UNDER MY DIRECTION AND CONTROL AND THAT THIS U.S. PUBLIC LAND SURVEY MONUMENT RECORD IS CORRECT AND COMPLETE TO THE BEST OF MY KNOWLEDGE AND BELIEF.

  
SIGNATURE

3-10-04  
DATE



CERTIFICATE

CERTIFIED LAND CORNER

21501310000

No. 131

I, Gary L. Dechant, do hereby certify that on the 16th day of November 1998, I found (evidence) (no evidence) of the SE corner of Section 31, T 15 N, R 1 W Fourth Principal Meridian, and I re-established said corner according to the Wisconsin Statutes as shown and described hereon.

Dated this 1st day of Dec. 1998.

Gary L. Dechant

R.L.S. 1744 Title

History of corner establishment since Original Government Survey

Vernon County Records in Book 1, P. 401 show that Sterling was here in 1892.

James Carroll was here in an earlier survey according to information given to me by H.A.Sime & Associates.

I found a survey by Carroll in the survey records, not dated, showing part of the South line of the SE 1/4. Description of corner evidence found: but does not show a monument at the SE corner of Section 31.

I found no monument at this corner. Accepted fence corner as best available evidence and appears to fit Carroll's survey.

COUNTY SURVEYOR FORM NO. 1

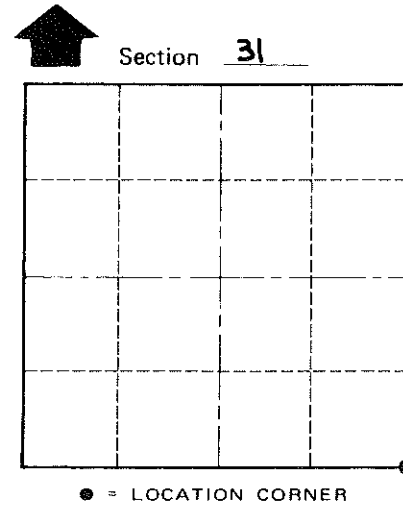
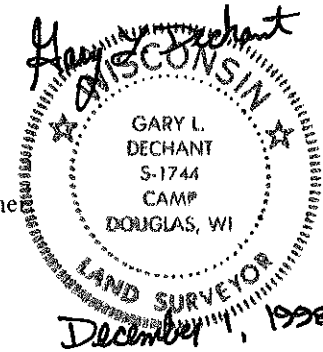
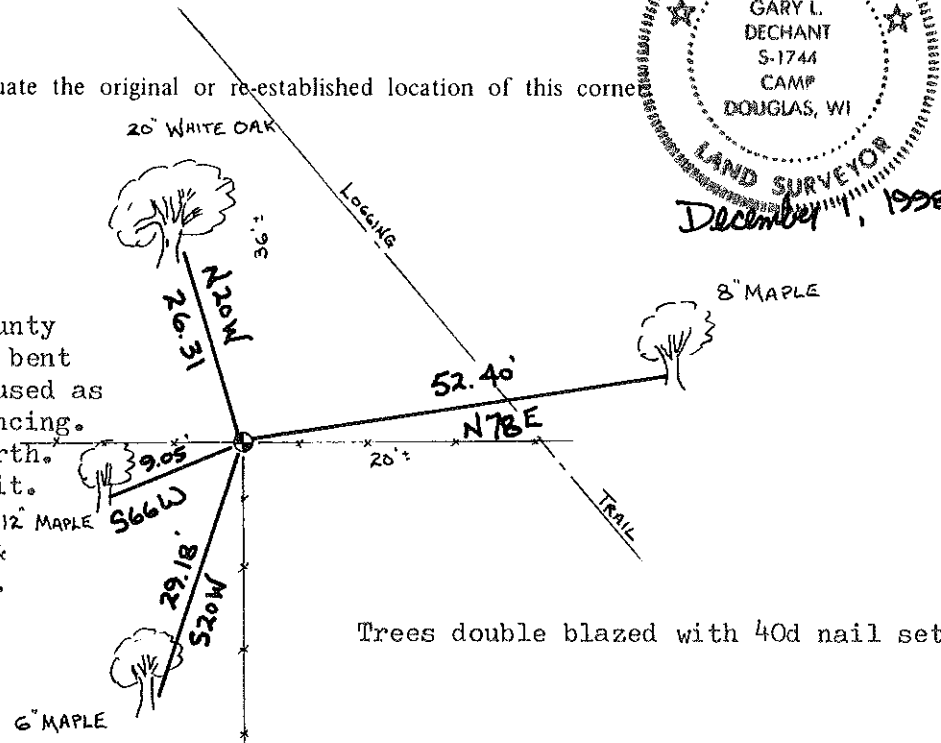
Description of corner and witness monuments, references and accessories used to perpetuate the original or re-established location of this corner

Witnesses to corner location:

David E. Madison

Gary L. Dechant

Set cast iron TCP County monument 1' north of bent 2" steel post being used as a corner post for fencing. Dug small pit 3 1/2' north. set survey sign in pit. There is a large 12" MAPLE 3' west of pit & 4' from TCP monument.



T 15 N R 1 W WISCONSIN

SURVEY CONTROL ORDER

Table with 2 rows: Horizontal, Vertical.

WISCONSIN COORDINATE SYSTEM

Table with 5 columns: Corner, Control Sta. Name, East (X), North (Y), Elevation (Z), Zone.

City, Village or Town WELLINGTON County of MONROE