

21501300020

I, William C. Jung, do hereby certify that on the 13th day of April 1979, I found (evidence) ~~(no evidence)~~ of the South 1/4 corner of Section 30, T 15 N, R 1 W Fourth Principal Meridian, and I re-established said corner according to the Wisconsin Statutes as shown and described hereon.

Dated this 5th day of Jan. 1981.

William C. Jung

William C. Jung, R.L.S. 1323
Title

History of corner establishment since Original Government Survey

H. La Rue was here in June of 1897.

Description of corner evidence found:

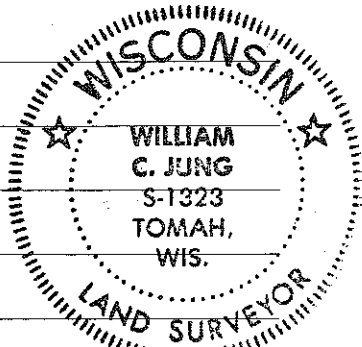
Found LaRue's B.T. stump to reestablish corner. The existing hexagon iron bar was my survey point. The corner was monumented with a 1 1/4" iron bar.

Description of corner and witness monuments, references and accessories used to perpetuate the original or re-established location of this corner:

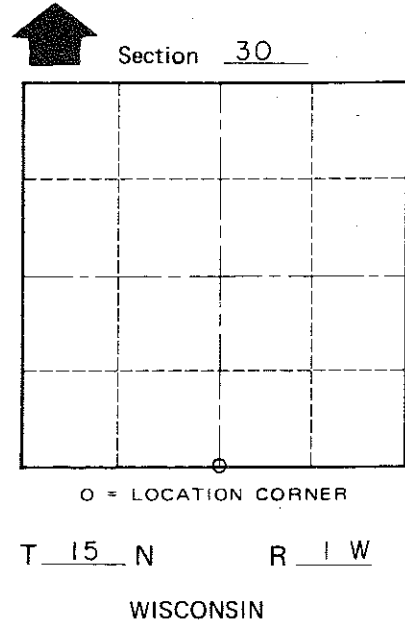
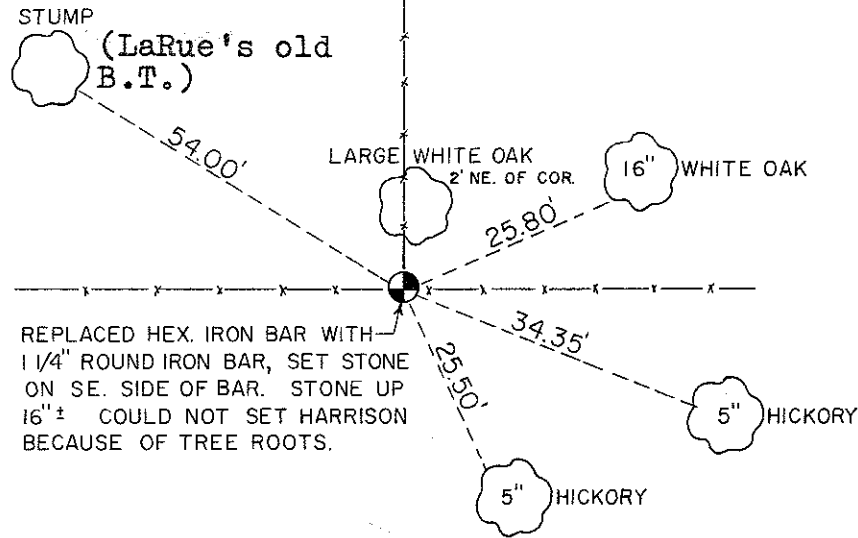
NOTE: ALL TREES DOUBLE BLAZED WITH NAIL & CAP SET.

Witnesses to corner location:

Dechant
Pietz
Meyer
Jung



Approved: **HARLEY A. SIME**
MONROE CO. SURVEYOR



COUNTY SURVEYOR FORM NO. 1

SURVEY CONTROL ORDER

Horizontal _____
Vertical _____

WISCONSIN COORDINATE SYSTEM

Corner	East (X)	North (Y)	Elevation (Z)	Zone
Control Sta. Name				

or Town Wellington
County of Monroe